

CFAP20/GTL3 Rabbit mAb

Catalog No.: A24115 **Recombinant**

Basic Information

Observed MW

23kDa

Calculated MW

23kDa

Category

Primary antibody

Applications

WB,IHC-P,ELISA

Cross-Reactivity

Human, Mouse, Rat

CloneNo number

ARC58773

Background

Enables RNA binding activity. Involved in several processes, including positive regulation of feeding behavior; protein polyglutamylation; and regulation of cell motility. Located in centriole; ciliary basal body; and nucleoplasm.

Recommended Dilutions

WB 1:2000 - 1:7000

IHC-P 1:200 - 1:800

ELISA Recommended starting concentration is 1 µg/mL. Please optimize the concentration based on your specific assay requirements.

Immunogen Information

Gene ID

29105

Swiss Prot

Q9Y6A4

Immunogen

Synthetic peptide. This information is considered to be commercially sensitive.

Synonyms

GTL3; BUG22; EVORF; fSAP23; C16orf80; CFAP20/GTL3

Contact

☎ | 400-999-6126

✉ | cn.market@abclonal.com.cn

🌐 | www.abclonal.com.cn

Product Information

Source

Rabbit

Isotype

IgG

Purification

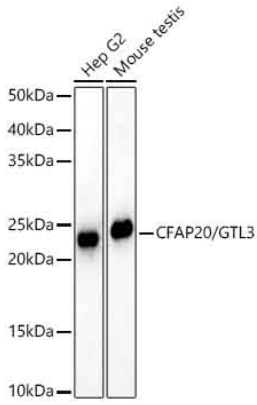
Affinity purification

Storage

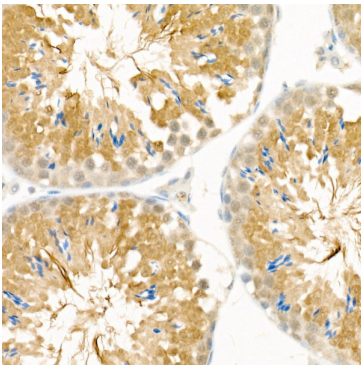
Store at -20°C. Avoid freeze / thaw cycles.

Buffer: PBS containing 50% glycerol and 0.05% BSA, preserved with proclin300 or sodium azide (as specified on the Certificate of Analysis), pH 7.3.

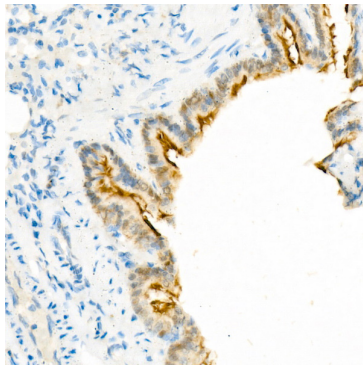
Validation Data



Western blot analysis of various lysates using CFAP20/GTL3 Rabbit mAb (A24115) at 1:6000 dilution.
Secondary antibody: HRP-conjugated Goat anti-Rabbit IgG (H+L) (AS014) at 1:10000 dilution.
Lysates / proteins: 25 µg per lane.
Blocking buffer: 3 % nonfat dry milk in TBST.
Detection: ECL Basic Kit (RM00020).
Exposure time: 90s.



Immunohistochemistry analysis of paraffin-embedded Mouse testis tissue using CFAP20/GTL3 Rabbit mAb (A24115) at a dilution of 1:300 (40x lens). High pressure antigen retrieval was performed with 0.01 M citrate buffer (pH 6.0) prior to IHC staining.



Immunohistochemistry analysis of paraffin-embedded Rat bronchus tissue using CFAP20/GTL3 Rabbit mAb (A24115) at a dilution of 1:300 (40x lens). High pressure antigen retrieval was performed with 0.01 M citrate buffer (pH 6.0) prior to IHC staining.