

ABflo® 594 Rabbit anti-Human GP6/GPVI mAb

Catalog No.: A24105

Basic Information

Observed MW

Calculated MW

37kDa

Category

Primary antibody

Applications

FC

Cross-Reactivity

Human

CloneNo number

ARC64454

Conjugate

ABflo® 594. Ex:588nm. Em:604nm.

Recommended Dilutions

FC 5 µl per 10⁶ cells in
100 µl volume

Background

This gene encodes a platelet membrane glycoprotein of the immunoglobulin superfamily. The encoded protein is a receptor for collagen and plays a critical role in collagen-induced platelet aggregation and thrombus formation. The encoded protein forms a complex with the Fc receptor gamma-chain that initiates the platelet activation signaling cascade upon collagen binding. Mutations in this gene are a cause of platelet-type bleeding disorder-11 (BDPLT11). Alternatively spliced transcript variants encoding multiple isoforms have been observed for this gene.

Immunogen Information

Gene ID

51206

Swiss Prot

Q9HCN6

Immunogen

Recombinant protein (or fragment). This information is considered to be commercially sensitive.

Synonyms

GPIV; GPVI; BDPLT11

Contact

☎ | 400-999-6126

✉ | cn.market@abclonal.com.cn

🌐 | www.abclonal.com.cn

Product Information

Source

Rabbit

Isotype

IgG

Purification

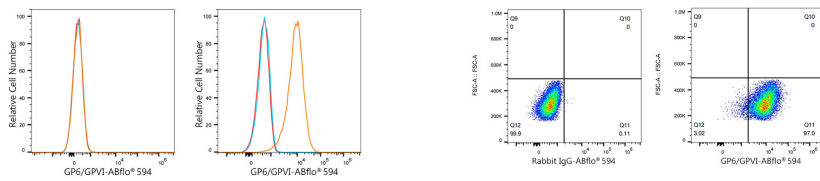
Affinity purification

Storage

Store at 2-8°C. Avoid freeze.

Buffer: PBS containing 0.2% BSA, preserved with proclin300 or sodium azide (as specified on the Certificate of Analysis), pH 7.3.

Validation Data



Flow cytometry: 1×10^6 MOLT-4 cells (negative control, left) and HEL cells (right) were surface-stained with ABflo® 594 Rabbit anti-Human GP6/GPVI mAb (A24105, 5 μ l/Test, orange line) or ABflo® 594 Rabbit IgG isotype control (A23821, 5 μ l/Test, blue line). Non-fluorescently stained cells were used as blank control (red line).

Flow cytometry: 1×10^6 HEL cells were surface-stained with ABflo® 594 Rabbit IgG isotype control (A23821, 5 μ l/Test, left) or ABflo® 594 Rabbit anti-Human GP6/GPVI mAb (A24105, 5 μ l/Test, right).