

# ABflo® 647 Rabbit anti-Mouse CD112/Nectin-2 mAb

Catalog No.: A24091

## Basic Information

### Observed MW

### Calculated MW

57kDa

### Category

Primary antibody

### Applications

FC

### Cross-Reactivity

Mouse

### CloneNo number

ARC64537

### Conjugate

ABflo® 647. Ex:648nm. Em:664nm.

## Recommended Dilutions

FC 5 µl per 10<sup>6</sup> cells in  
100 µl volume

## Background

Enables cell adhesion molecule binding activity and protein homodimerization activity. Involved in homophilic cell adhesion via plasma membrane adhesion molecules. Acts upstream of or within several processes, including establishment of mitochondrion localization; sperm mitochondrion organization; and spermatid development. Located in cell-cell contact zone; plasma membrane; and zonula adherens. Is expressed in brain; cochlea; enamel organ; male reproductive system; and primitive collecting duct. Human ortholog(s) of this gene implicated in Alzheimer's disease and multiple sclerosis. Orthologous to human NECTIN2 (nectin cell adhesion molecule 2).

## Immunogen Information

### Gene ID

19294

### Swiss Prot

P32507

### Immunogen

Recombinant protein (or fragment). This information is considered to be commercially sensitive.

### Synonyms

MPH; Pvr; Pvs; Cd112; Pvr12; nectin-2

## Contact

☎ | 400-999-6126

✉ | [cn.market@abclonal.com.cn](mailto:cn.market@abclonal.com.cn)

🌐 | [www.abclonal.com.cn](http://www.abclonal.com.cn)

## Product Information

### Source

Rabbit

### Isotype

IgG

### Purification

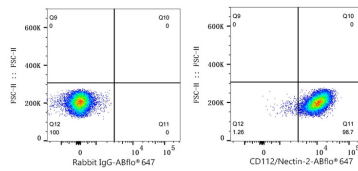
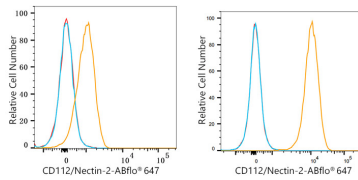
Affinity purification

### Storage

Store at 2-8°C. Avoid freeze.

Buffer: PBS containing 0.2% BSA, preserved with proclin300 or sodium azide (as specified on the Certificate of Analysis), pH 7.3.

## Validation Data



Flow cytometry:  $1 \times 10^6$  Raw264.7 cells (Low Expression, left) and C2C12 cells (right) were surface-stained with ABflo® 647 Rabbit anti-Mouse CD112/Nectin-2 mAb (A24091, 5  $\mu$ l/Test, orange line) or ABflo® 647 Rabbit IgG isotype control (A22070, 5  $\mu$ l/Test, blue line). Non-fluorescently stained cells were used as blank control (red line).

Flow cytometry:  $1 \times 10^6$  C2C12 cells were surface-stained with ABflo® 647 Rabbit IgG isotype control (A22070, 5  $\mu$ l/Test, left) or ABflo® 647 Rabbit anti-Mouse CD112/Nectin-2 mAb (A24091, 5  $\mu$ l/Test, right).