

[KD Validated] SNRNP70 Rabbit mAb

Catalog No.: A24073 **Recombinant**

Basic Information

Observed MW

68kDa

Calculated MW

52kDa

Category

Primary antibody

Applications

WB, ELISA

Cross-Reactivity

Human, Mouse

CloneNo number

ARC64486

Background

Enables U1 snRNA binding activity. Involved in mRNA splicing, via spliceosome and regulation of RNA splicing. Located in nucleoplasm. Part of U1 snRNP and spliceosomal complex. Implicated in disease of mental health and systemic lupus erythematosus. Biomarker of Alzheimer's disease.

Recommended Dilutions

WB 1:1000 - 1:5000

ELISA Recommended starting concentration is 1 µg/mL. Please optimize the concentration based on your specific assay requirements.

Immunogen Information

Gene ID

6625

Swiss Prot

P08621

Immunogen

Synthetic peptide. This information is considered to be commercially sensitive.

Synonyms

RPU1; Snp1; U1AP; U170K; U1RNP; RNPU1Z; SNRP70; U1-70K

Contact

☎ | 400-999-6126

✉ | cn.market@abclonal.com.cn

🌐 | www.abclonal.com.cn

Product Information

Source

Rabbit

Isotype

IgG

Purification

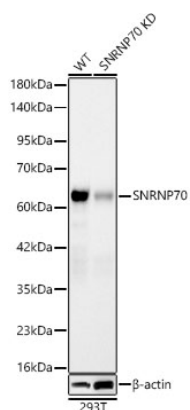
Affinity purification

Storage

Store at -20°C. Avoid freeze / thaw cycles.

Buffer: PBS containing 50% glycerol and 0.05% BSA, preserved with proclin300 or sodium azide (as specified on the Certificate of Analysis), pH 7.3.

Validation Data



Western blot analysis of lysates from wild type (WT) and SNRNP70 knockdown (KD) 293T cells using [KD Validated] SNRNP70 Rabbit mAb (A24073) at 1:3000 dilution.

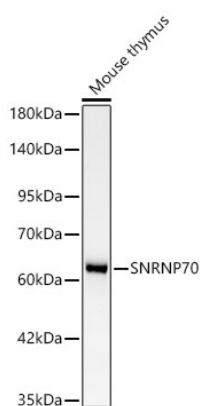
Secondary antibody: HRP-conjugated Goat anti-Rabbit IgG (H+L) (AS014) at 1:10000 dilution.

Lysates/proteins: 25 μ g per lane.

Blocking buffer: 3% nonfat dry milk in TBST.

Detection: ECL Basic Kit (RM00020)

Exposure time: 90s.



Western blot analysis of lysates from Mouse thymus using [KD Validated] SNRNP70 Rabbit mAb (A24073) at 1:1000 dilution.

Secondary antibody: HRP-conjugated Goat anti-Rabbit IgG (H+L) (AS014) at 1:10000 dilution.

Lysates/proteins: 25 μ g per lane.

Blocking buffer: 3% nonfat dry milk in TBST.

Detection: ECL Basic Kit (RM00020).

Exposure time: 90s.