

FXR/NR1H4 Rabbit mAb

Catalog No.: A24015

Recombinant

10 Publications

Basic Information

Observed MW

57kDa

Calculated MW

48kDa, 54kDa, 55kDa, 56kDa

Category

Primary antibody

Applications

WB, IHC-P, ELISA

Cross-Reactivity

Human, Mouse, Rat

CloneNo number

ARC62920

Background

This gene encodes a ligand-activated transcription factor that shares structural features in common with nuclear hormone receptor family members. This protein functions as a receptor for bile acids, and when bound to bile acids, binds to DNA and regulates the expression of genes involved in bile acid synthesis and transport. Alternatively spliced transcript variants encoding different isoforms have been described.

Recommended Dilutions

WB 1:1000 - 1:2000

IHC-P 1:200 - 1:800

ELISA Recommended starting concentration is 1 µg/mL. Please optimize the concentration based on your specific assay requirements.

Immunogen Information

Gene ID

9971

Swiss Prot

Q96RI1

Immunogen

Recombinant protein (or fragment). This information is considered to be commercially sensitive.

Synonyms

BAR; FXR; HRR1; HRR-1; PFIC5; RIP14; FXR/NR1H4

Contact

☎ | 400-999-6126

✉ | cn.market@abclonal.com.cn

🌐 | www.abclonal.com.cn

Product Information

Source

Rabbit

Isotype

IgG

Purification

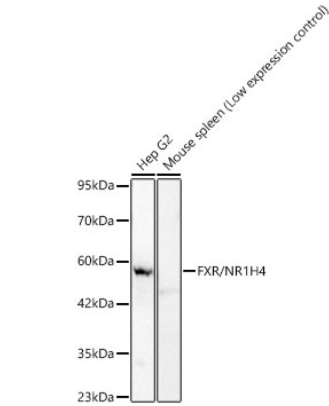
Affinity purification

Storage

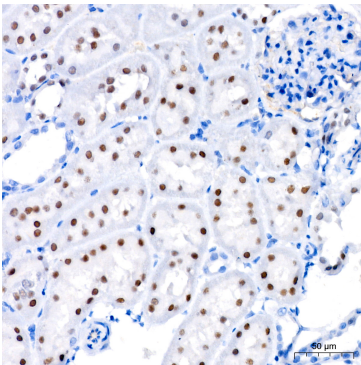
Store at -20°C. Avoid freeze / thaw cycles.

Buffer: PBS containing 50% glycerol and 0.05% BSA, preserved with proclin300 or sodium azide (as specified on the Certificate of Analysis), pH 7.3.

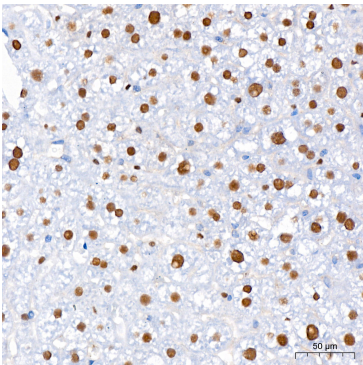
Validation Data



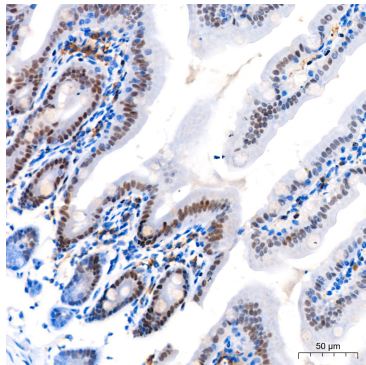
Western blot analysis of various lysates using FXR/NR1H4 Rabbit mAb (A24015) at 1:1000 dilution incubated overnight at 4°C.
Secondary antibody: HRP-conjugated Goat anti-Rabbit IgG (H+L) (AS014) at 1:10000 dilution.
Lysates/proteins: 25µg per lane.
Blocking buffer: 3% nonfat dry milk in TBST.
Detection: ECL Basic Kit (RM00020).
Exposure time: 90s.



Immunohistochemistry analysis of paraffin-embedded Rat kidney using FXR/NR1H4 Rabbit mAb (A24015) at dilution of 1:200 (40x lens). High pressure antigen retrieval performed with 0.01M Citrate buffer (pH 6.0) prior to IHC staining.



Immunohistochemistry analysis of paraffin-embedded Mouse liver using FXR/NR1H4 Rabbit mAb (A24015) at dilution of 1:200 (40x lens). High pressure antigen retrieval performed with 0.01M Citrate buffer (pH 6.0) prior to IHC staining.



Immunohistochemistry analysis of paraffin-embedded Mouse colon using FXR/NR1H4 Rabbit mAb (A24015) at dilution of 1:200 (40x lens). High pressure antigen retrieval performed with 0.01M Citrate buffer (pH 6.0) prior to IHC staining.