

PLGF Rabbit mAb

Catalog No.: A2400 **Recombinant**

Basic Information

Observed MW

25 kDa

Calculated MW

25 kDa

Category

Primary antibody

Applications

WB,IF-P,ELISA

Cross-Reactivity

Human, Mouse, Rat

CloneNo number

ARC0749

Background

Enables growth factor activity. Involved in positive regulation of cell population proliferation. Predicted to be located in extracellular region. Predicted to be active in extracellular space. Implicated in several diseases, including brain ischemia; diabetic neuropathy; glioblastoma; myocardial infarction; and pancreatic endocrine carcinoma. Biomarker of several diseases, including artery disease (multiple); autoimmune disease of musculoskeletal system (multiple); epilepsy (multiple); limited scleroderma; and pancreatic endocrine carcinoma.

Recommended Dilutions

WB 1:1000 - 1:2000

IF-P 1:50 - 1:200

ELISA Recommended starting concentration is 1 µg/mL. Please optimize the concentration based on your specific assay requirements.

Immunogen Information

Gene ID

5228

Swiss Prot

P49763

Immunogen

Synthetic peptide. This information is considered to be commercially sensitive.

Synonyms

PGFL; PIGF; PLGF; PIGF-2; D12S1900; SHGC-10760

Contact

☎ | 400-999-6126

✉ | cn.market@abclonal.com.cn

🌐 | www.abclonal.com.cn

Product Information

Source

Rabbit

Isotype

IgG

Purification

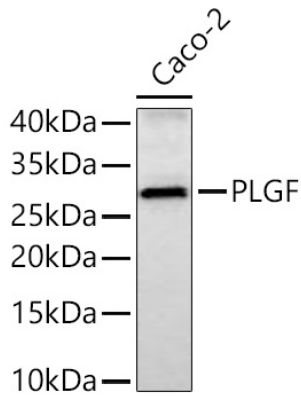
Affinity purification

Storage

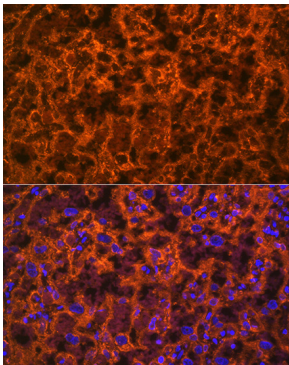
Store at -20°C. Avoid freeze / thaw cycles.

Buffer: PBS containing 50% glycerol and 0.05% BSA, preserved with proclin300 or sodium azide (as specified on the Certificate of Analysis), pH 7.3.

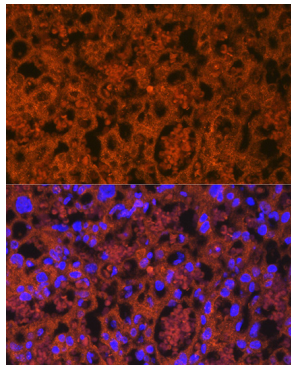
Validation Data



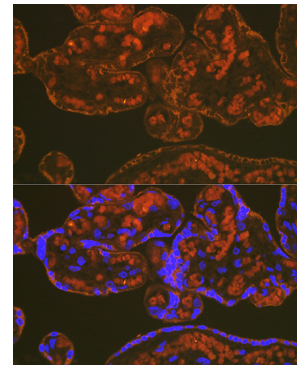
Western blot analysis of lysates from Caco-2 cells using PLGF Rabbit mAb (A2400) at 1:1000 dilution incubated overnight at 4°C.
Secondary antibody: HRP-conjugated Goat anti-Rabbit IgG (H+L) (AS014) at 1:10000 dilution.
Lysates/proteins: 25 µg per lane.
Blocking buffer: 3% nonfat dry milk in TBST.
Detection: ECL Basic Kit (RM00020).
Exposure time: 45 s.



Immunofluorescence analysis of paraffin-embedded rat placenta using PLGF Rabbit mAb (A2400) at dilution of 1:100 (40x lens). Secondary antibody: Cy3-conjugated Goat anti-Rabbit IgG (H+L) (AS007) at 1:500 dilution. Blue: DAPI for nuclear staining.



Immunofluorescence analysis of paraffin-embedded mouse placenta using PLGF Rabbit mAb (A2400) at dilution of 1:100 (40x lens). Secondary antibody: Cy3-conjugated Goat anti-Rabbit IgG (H+L) (AS007) at 1:500 dilution. Blue: DAPI for nuclear staining.



Immunofluorescence analysis of paraffin-embedded human placenta using PLGF Rabbit mAb (A2400) at dilution of 1:100 (40x lens). Secondary antibody: Cy3-conjugated Goat anti-Rabbit IgG (H+L) (AS007) at 1:500 dilution. Blue: DAPI for nuclear staining.