

# ICOS/CD278 Rabbit mAb

Catalog No.: A23995 **Recombinant**

## Basic Information

### Observed MW

22-35kDa

### Calculated MW

22kDa

### Category

Primary antibody

### Applications

ELISA, WB, IF/ICC, FC

### Cross-Reactivity

Mouse

### CloneNo number

ARC62052

## Background

Predicted to be involved in T cell costimulation; T cell tolerance induction; and cell-cell adhesion. Located in external side of plasma membrane. Is integral component of plasma membrane. Used to study common variable immunodeficiency. Human ortholog(s) of this gene implicated in celiac disease; common variable immunodeficiency; and immunoglobulin alpha deficiency. Orthologous to human ICOS (inducible T cell costimulator).

## Recommended Dilutions

<b>WB</b>	1:1000 - 1:5000
<b>IF/ICC</b>	1:50 - 1:200
<b>FC</b>	1:500 - 1:1000

## Immunogen Information

### Gene ID

54167

### Swiss Prot

Q9WVS0

### Immunogen

Recombinant fusion protein containing a sequence corresponding to amino acids 21-142 of mouse ICOS/CD278(NP\_059508.2).

### Synonyms

H4; CCLP; AILIM; CRP-1; Ly115; ICOS/CD278

## Contact

☎	400-999-6126
✉	cn.market@abclonal.com.cn
🌐	www.abclonal.com.cn

## Product Information

### Source

Rabbit

### Isotype

IgG

### Purification

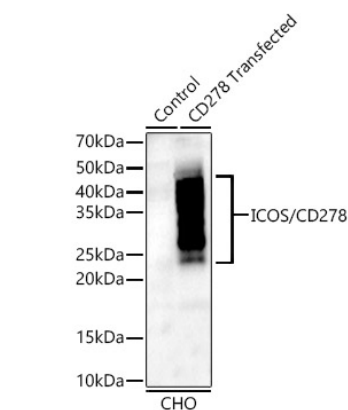
Affinity purification

### Storage

Store at -20°C. Avoid freeze / thaw cycles.

Buffer: PBS with 0.05% proclin300, 0.05% BSA, 50% glycerol, pH7.3.

## Validation Data



Western blot analysis of lysates from wild type (WT) and CHO cells transfected with CD278 using CD278 Rabbit mAb (A23995) at 1:1000 dilution.

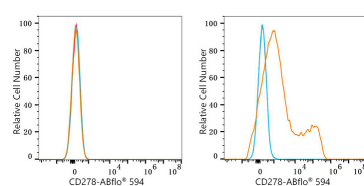
Secondary antibody: HRP Goat Anti-Rabbit IgG (H+L) (AS014) at 1:10000 dilution.

Lysates/proteins: 25ug per lane.

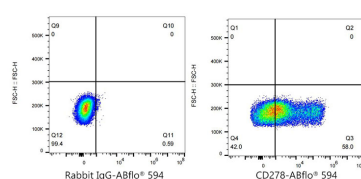
Blocking buffer: 3% nonfat dry milk in TBST.

Detection: ECL Enhanced Kit (RM00021).

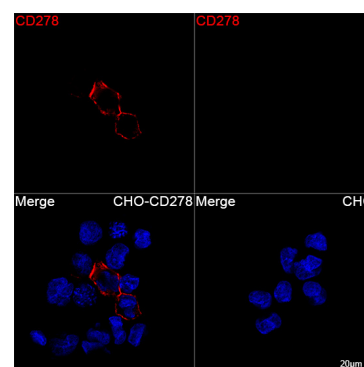
Exposure time: 180s.



Flow cytometry:  $1 \times 10^6$  CHO cells (negative control, left) and CHO (Transfection, right) were surface-stained with CD278 Rabbit mAb (A23995, 2  $\mu\text{g/mL}$ , orange line) or ABflo® 594 Rabbit IgG isotype control (A23821, 2  $\mu\text{g/mL}$ , blue line), followed by ABflo™ 594-conjugated Goat Anti-Rabbit IgG (H+L) (1:500 dilution) staining. Non-fluorescently stained cells were used as blank control (red line).



Flow cytometry:  $1 \times 10^6$  CHO (Transfection) cells were surface-stained with ABflo® 594 Rabbit IgG isotype control (A23821, 2  $\mu\text{g/mL}$ , left) or CD278 Rabbit mAb (A23995, 2  $\mu\text{g/mL}$ , right).



Confocal imaging of CHO (Transfection, left) and CHO cells (negative control, right) using CD278 Rabbit mAb (A23995, dilution 1:200) (Red). DAPI was used for nuclear staining (blue). Objective: 100x.