

# ABflo® 488 Rabbit anti-Mouse CD98 mAb

Catalog No.: A23981

## Basic Information

### Observed MW

Refer to figures

### Calculated MW

58kDa

### Category

Primary antibody

### Applications

FC

### Cross-Reactivity

Mouse

### CloneNo number

ARC61479

### Conjugate

ABflo® 488. Ex:491nm. Em:516nm.

## Recommended Dilutions

FC 5 µl per 10<sup>6</sup> cells in  
100 µl volume

## Background

Predicted to enable amino acid transmembrane transporter activity and double-stranded RNA binding activity. Predicted to be involved in carboxylic acid transport and viral entry into host cell. Predicted to act upstream of or within response to exogenous dsRNA. Located in apical pole of neuron. Is active in synapse. Is expressed in several structures, including alimentary system; brain; genitourinary system; hemolymphoid system gland; and spinal cord. Orthologous to human SLC3A2 (solute carrier family 3 member 2).

## Immunogen Information

### Gene ID

17254

### Swiss Prot

P10852

### Immunogen

Recombinant protein (or fragment). This information is considered to be commercially sensitive.

### Synonyms

4F2; Cd98; Ly10; Mdu1; 4F2HC; Ly-10; NACAE; Ly-m10; Mgp-2hc

## Contact

☎ | 400-999-6126

✉ | [cn.market@abclonal.com.cn](mailto:cn.market@abclonal.com.cn)

🌐 | [www.abclonal.com.cn](http://www.abclonal.com.cn)

## Product Information

### Source

Rabbit

### Isotype

IgG

### Purification

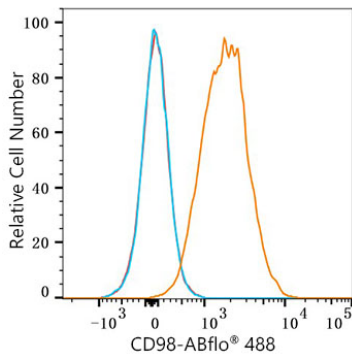
Affinity purification

### Storage

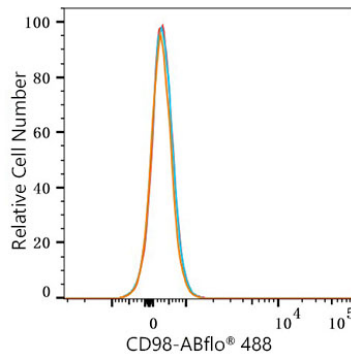
Store at 2-8°C. Avoid freeze.

Buffer: PBS containing 0.2% BSA, preserved with proclin300 or sodium azide (as specified on the Certificate of Analysis), pH 7.3.

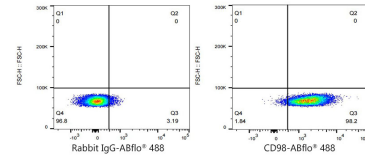
## Validation Data



Flow cytometry:  $1 \times 10^6$  C57BL/6 mouse splenocyte were surface-stained with ABflo® 488 Rabbit anti-Mouse CD98 mAb(A23981,5  $\mu$ l/Test,orange line) or ABflo® 488 Rabbit IgG isotype control (A22069,5  $\mu$ l/Test,blue line).Non-fluorescently stained C57BL/6 mouse splenocyte were used as blank control (red line).



Flow cytometry:  $1 \times 10^6$  SH-SY5Y cells(negative control) were surface-stained with ABflo® 488 Rabbit anti-Mouse CD98 mAb(A23981,5  $\mu$ l/Test,orange line) or ABflo® 488 Rabbit IgG isotype control (A22069,5  $\mu$ l/Test,blue line).Non-fluorescently stained SH-SY5Y were used as blank control (red line).



Flow cytometry: $1 \times 10^6$  C57BL/6 mouse splenocyte were surface-stained with ABflo® 488 Rabbit IgG isotype control (A22069,5  $\mu$ l/Test,left) or ABflo® 488 Rabbit anti-Mouse CD98 mAb(A23981,5  $\mu$ l/Test,right).