

MOB1A/B Rabbit mAb

Catalog No.: A23963 **Recombinant** **1 Publications**

Basic Information

Observed MW

25 kDa

Calculated MW

25 kDa

Category

Primary antibody

Applications

WB,IP,ELISA

Cross-Reactivity

Human, Mouse, Rat

CloneNo number

ARC62859

Background

The protein encoded by this gene is a component of the Hippo signaling pathway, which controls organ size and tumor growth by enhancing apoptosis. Loss of the encoded protein results in cell proliferation and cancer formation. The encoded protein is also involved in the control of microtubule stability during cytokinesis. Several transcript variants encoding different isoforms have been found for this gene.

Recommended Dilutions

WB 1:1000 - 1:5000

IP 0.5 µg-4 µg antibody for
200 µg-600 µg extracts
of whole cells

ELISA Recommended starting
concentration is 1 µg/mL.
Please optimize the
concentration based on
your specific assay
requirements.

Immunogen Information

Gene ID
55233/92597

Swiss Prot
Q9H8S9/Q7I9L4

Immunogen

Synthetic peptide. This information is considered to be commercially sensitive.

Synonyms

MOB1; MATS1; Mob4B; C2orf6; MOBK1B; MABKL1B; MOBKL1B; MOB1A/B

Contact

 | 400-999-6126

 | cn.market@abclonal.com.cn

 | www.abclonal.com.cn

Product Information

Source
Rabbit

Isotype
IgG

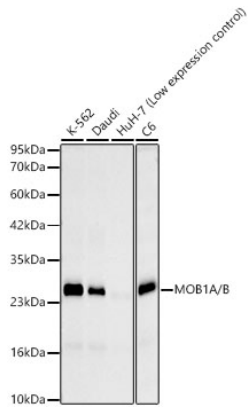
Purification
Affinity purification

Storage

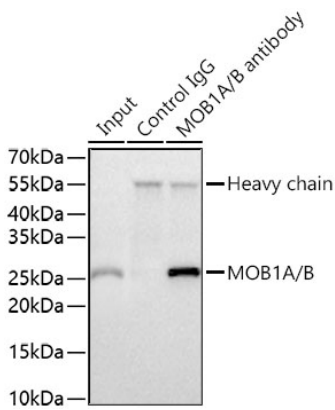
Store at -20°C. Avoid freeze / thaw cycles.

Buffer: PBS containing 50% glycerol and 0.05% BSA, preserved with proclin300 or sodium azide (as specified on the Certificate of Analysis), pH 7.3.

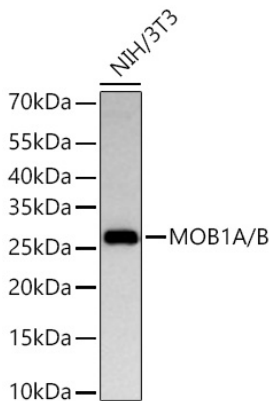
Validation Data



Western blot analysis of various lysates, using MOB1A/B Rabbit mAb (A23963) at 1:3000 dilution incubated overnight at 4°C.
Secondary antibody: HRP-conjugated Goat anti-Rabbit IgG (H+L) (AS014) at 1:10000 dilution.
Lysates/proteins: 25 µg per lane.
Blocking buffer: 3% nonfat dry milk in TBST.
Detection: ECL Basic Kit (RM00020).
Exposure time: 30 s.



Immunoprecipitation of MOB1A/B from 300 µg extracts of K-562 cells was performed using 1 µg of MOB1A/B Rabbit mAb (A23963). Rabbit Control IgG (AC005) was used to precipitate the Control IgG sample. IP samples were eluted with 1x Laemmli Buffer. The Input lane represents 10% of the total input. Western blot analysis of immunoprecipitates was conducted using MOB1A/B Rabbit mAb (A23963) at a dilution of 1:10000.



Western blot analysis of lysates from NIH/3T3 cells using MOB1A/B Rabbit mAb (A23963) at 1:2000 dilution incubated overnight at 4°C.
Secondary antibody: HRP-conjugated Goat anti-Rabbit IgG (H+L) (AS014) at 1:10000 dilution.
Lysates/proteins: 25 µg per lane.
Blocking buffer: 3% nonfat dry milk in TBST.
Detection: ECL Basic Kit (RM00020).
Exposure time: 45 s.