

# ROCK2 Rabbit mAb

Catalog No.: A2395 **Recombinant** **8 Publications**

## Basic Information

### Observed MW

161kDa

### Calculated MW

161kDa

### Category

Primary antibody

### Applications

WB,Auto WB,IHC-P,ELISA

### Cross-Reactivity

Human, Mouse, Rat

### CloneNo number

ARC0744

## Background

The protein encoded by this gene is a serine/threonine kinase that regulates cytokinesis, smooth muscle contraction, the formation of actin stress fibers and focal adhesions, and the activation of the c-fos serum response element. This protein, which is an isozyme of ROCK1 is a target for the small GTPase Rho.

## Recommended Dilutions

**WB** 1:1000 - 1:2000

**Auto WB** 1:100 - 1:500

**IHC-P** 1:200 - 1:800

**ELISA** Recommended starting concentration is 1 µg/mL. Please optimize the concentration based on your specific assay requirements.

## Immunogen Information

### Gene ID

9475

### Swiss Prot

O75116

### Immunogen

Synthetic peptide. This information is considered to be commercially sensitive.

### Synonyms

ROCK-II; ROCK2

## Contact

☎ | 400-999-6126

✉ | [cn.market@abclonal.com.cn](mailto:cn.market@abclonal.com.cn)

🌐 | [www.abclonal.com.cn](http://www.abclonal.com.cn)

## Product Information

### Source

Rabbit

### Isotype

IgG

### Purification

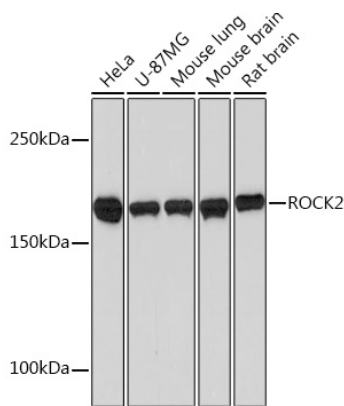
Affinity purification

### Storage

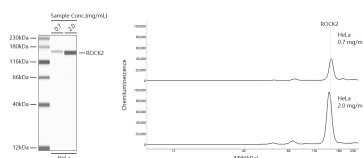
Store at -20°C. Avoid freeze / thaw cycles.

Buffer: PBS containing 50% glycerol and 0.05% BSA, preserved with proclin300 or sodium azide (as specified on the Certificate of Analysis), pH 7.3.

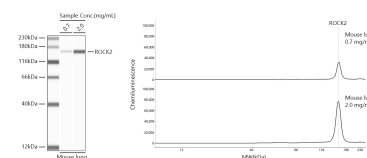
## Validation Data



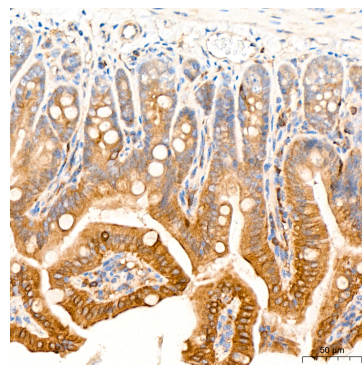
Western blot analysis of various lysates using ROCK2 Rabbit mAb (A2395) at 1:1000 dilution. Secondary antibody: HRP-conjugated Goat anti-Rabbit IgG (H+L) (AS014) at 1:10000 dilution. Lysates/proteins: 25µg per lane. Blocking buffer: 3% nonfat dry milk in TBST. Detection: ECL Basic Kit (RM00020). Exposure time: 90s.



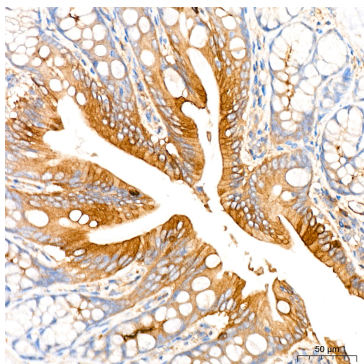
Simple Western™ analysis of lysates from HeLa cells using ROCK2 Rabbit mAb (A2395) at 1:100 dilution. The virtual lane view (left) shows the target band (as indicated) with samples in concentrations of 0.7 mg/mL and 2.0 mg/mL. The corresponding electropherogram view (right) plots chemiluminescence intensity against molecular weight along the capillary for sample concentrations of 0.7 mg/mL and 2.0 mg/mL. This experiment was performed under reducing conditions on the Jess™ Simple Western instrument from ProteinSimple, a BioTechne brand, using the 12-230 kDa separation module.



Simple Western™ analysis of lysates from Mouse lung using ROCK2 Rabbit mAb (A2395) at 1:100 dilution. The virtual lane view (left) shows the target band (as indicated) with samples in concentrations of 0.7 mg/mL and 2.0 mg/mL. The corresponding electropherogram view (right) plots chemiluminescence intensity against molecular weight along the capillary for sample concentrations of 0.7 mg/mL and 2.0 mg/mL. This experiment was performed under reducing conditions on the Jess™ Simple Western instrument from ProteinSimple, a BioTechne brand, using the 12-230 kDa separation module.



Immunohistochemistry analysis of paraffin-embedded Mouse intestine tissue using ROCK2 Rabbit mAb (A2395) at a dilution of 1:200 (40x lens). High pressure antigen retrieval was performed with 0.01 M citrate buffer (pH 6.0) prior to IHC staining.



Immunohistochemistry analysis of paraffin-embedded Rat colon tissue using ROCK2 Rabbit mAb (A2395) at a dilution of 1:200 (40x lens). High pressure antigen retrieval was performed with 0.01 M citrate buffer (pH

## Validation Data

---

6.0) prior to IHC staining.