

Pro-MMP9 Rabbit mAb

Catalog No.: A23919 **Recombinant**

Basic Information

Observed MW

40kDa

Calculated MW

80KDa

Category

Primary antibody

Applications

ELISA, WB

Cross-Reactivity

Mouse

CloneNo number

ARC62081

Background

This gene encodes a member of the matrix metalloproteinase family of extracellular matrix-degrading enzymes that are involved in tissue remodeling, wound repair, progression of atherosclerosis and tumor invasion. The encoded preproprotein undergoes proteolytic processing to generate a mature, zinc-dependent endopeptidase enzyme that degrades collagens of type IV, V and XI, and elastin. Mice lacking the encoded protein exhibit an abnormal pattern of skeletal growth plate vascularization and ossification, reduced keratinocyte hyperproliferation at all neoplastic stages, a decreased incidence of invasive tumors, and resistance to experimental autoimmune encephalomyelitis.

Recommended Dilutions

WB 1:500 - 1:1000

Immunogen Information

Gene ID

17395

Swiss Prot

P41245

Immunogen

Recombinant fusion protein containing a sequence corresponding to amino acids 20-107 of mouse MMP9(NP_038627.1).

Synonyms

Clg4b; Gel B; MMP-9; B/MMP9; pro-MMP-9; Pro-MMP9

Contact

☎ | 400-999-6126

✉ | cn.market@abclonal.com.cn

🌐 | www.abclonal.com.cn

Product Information

Source

Rabbit

Isotype

IgG

Purification

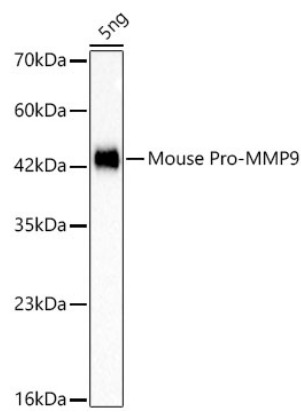
Affinity purification

Storage

Store at -20°C. Avoid freeze / thaw cycles.

Buffer: PBS with 0.05% proclin300, 0.05% BSA, 50% glycerol, pH7.3.

Validation Data



Western blot analysis of 5ng Mouse Pro-MMP9 protein, using Pro-MMP9 Rabbit mAb (A23919) at 1:1000 dilution.
Secondary antibody: HRP Goat Anti-Rabbit IgG (H+L) (AS014) at 1:10000 dilution.
Lysates/proteins: 25µg per lane.
Blocking buffer: 3% nonfat dry milk in TBST.
Detection: ECL Basic Kit (RM00020).
Exposure time: 0.3s.