

JAM-A/CD321/F11R Rabbit PolymAb®

Catalog No.: A23909PM

Basic Information

Observed MW

40kDa

Calculated MW

32kDa

Category

Primary antibody

Applications

WB,IF/ICC,ELISA

Cross-Reactivity

Human, Mouse, Rat

Background

Predicted to enable PDZ domain binding activity; integrin binding activity; and protein homodimerization activity. Involved in intestinal absorption; regulation of cytokine production; and regulation of membrane permeability. Acts upstream of or within cell adhesion and epithelial cell differentiation. Located in bicellular tight junction. Is expressed in several structures, including 4-8 cell stage embryo; alimentary system; respiratory system; sensory organ; and urinary system. Human ortholog(s) of this gene implicated in hypertension. Orthologous to human F11R (F11 receptor).

Recommended Dilutions

WB 1:5500 - 1:11000

IF/ICC 1:100 - 1:400

ELISA Recommended starting concentration is 1 µg/mL. Please optimize the concentration based on your specific assay requirements.

Immunogen Information

Gene ID

50848/16456

Swiss Prot

Q9Y624/O88792

Immunogen

Recombinant protein (or fragment). This information is considered to be commercially sensitive.

Synonyms

JAM; Jcam; JAM-1; JAM-A; Jcam1; Ly106; ESTM33; 9130004G24; JAM-A/CD321

Contact

☎ | 400-999-6126

✉ | cn.market@abclonal.com.cn

🌐 | www.abclonal.com.cn

Product Information

Source

Rabbit

Isotype

IgG

Purification

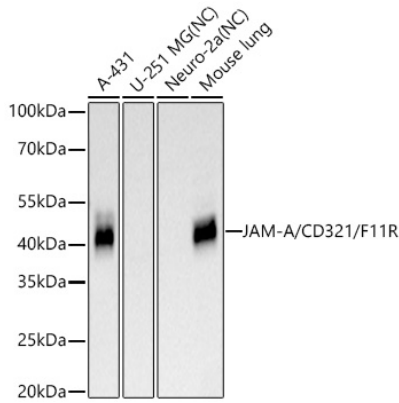
Affinity purification

Storage

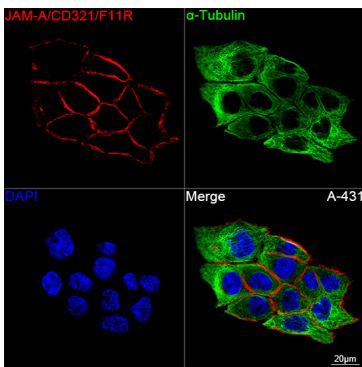
Store at -20°C. Avoid freeze / thaw cycles.

Buffer: PBS containing 50% glycerol and 0.05% BSA, preserved with proclin300 or sodium azide (as specified on the Certificate of Analysis), pH 7.3.

Validation Data



Western blot analysis of various lysates using JAM-A/CD321/F11R Rabbit PolymAb® (A23909PM) at 1:10000 dilution incubated overnight at 4°C.
Secondary antibody: HRP-conjugated Goat anti-Rabbit IgG (H+L) (AS014) at 1:10000 dilution.
Lysates/proteins: 25 µg per lane.
Blocking buffer: 3% nonfat dry milk in TBST.
Detection: ECL Basic Kit (RM00020).
Negative control (NC): U-251 MG, Neuro-2a
Exposure time: 90 s.



Confocal imaging of A-431 cells using JAM-A/CD321/F11R Rabbit PolymAb® (A23909PM, dilution 1:200) followed by a further incubation with Cy3 Goat Anti-Rabbit IgG (H+L) (AS007, dilution 1:500) (Red). The cells were counterstained with α-Tubulin Mouse mAb (AC012, dilution 1:400) followed by incubation with ABflo® 488-conjugated Goat Anti-Mouse IgG (H+L) Ab (AS076, dilution 1:500) (Green). DAPI was used for nuclear staining (Blue). Objective: 100x.