

# [KO Validated] SMPD1 Rabbit mAb

Catalog No.: A23894 **KO Validated** **Recombinant** **2 Publications**

## Basic Information

### Observed MW

70 kDa

### Calculated MW

70 kDa

### Category

Primary antibody

### Applications

WB,IF-F,IHC-P,ELISA

### Cross-Reactivity

Human, Rat

### CloneNo number

ARC62108

## Background

The protein encoded by this gene is a lysosomal acid sphingomyelinase that converts sphingomyelin to ceramide. The encoded protein also has phospholipase C activity. Defects in this gene are a cause of Niemann-Pick disease type A (NPA) and Niemann-Pick disease type B (NPB). Multiple transcript variants encoding different isoforms have been identified.

## Recommended Dilutions

<b>WB</b>	1:500 - 1:2000
<b>IF-F</b>	1:100-1:400
<b>IHC-P</b>	1:50-1:200
<b>ELISA</b>	Recommended starting concentration is 1 µg/mL. Please optimize the concentration based on your specific assay requirements.

## Contact

	400-999-6126
	cn.market@abclonal.com.cn
	<a href="http://www.abclonal.com.cn">www.abclonal.com.cn</a>

## Immunogen Information

### Gene ID

6609

### Swiss Prot

P17405

### Immunogen

Recombinant protein (or fragment). This information is considered to be commercially sensitive.

### Synonyms

ASM; NPD; ASMASE; D1

## Product Information

### Source

Rabbit

### Isotype

IgG

### Purification

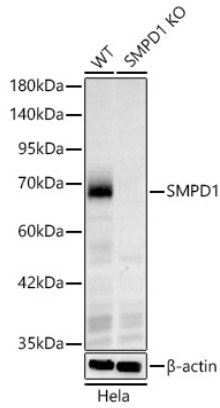
Affinity purification

### Storage

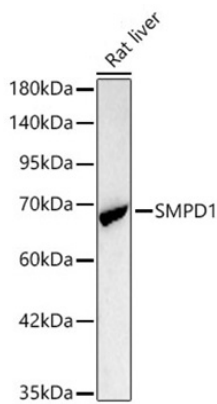
Store at -20°C. Avoid freeze / thaw cycles.

Buffer: PBS containing 50% glycerol and 0.05% BSA, preserved with proclin300 or sodium azide (as specified on the Certificate of Analysis), pH 7.3.

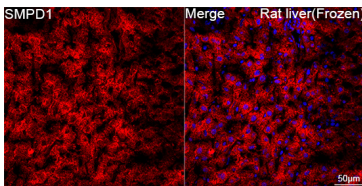
## Validation Data



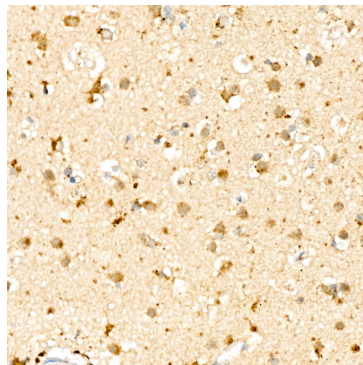
Western blot analysis of lysates from wild type (WT) and SMPD1 knockout (KO) HeLa cells, using SMPD1 Rabbit mAb (A23894) at 1:1000 dilution. Secondary antibody: HRP-conjugated Goat anti-Rabbit IgG (H+L) (AS014) at 1:10000 dilution. Lysates/proteins: 25µg per lane.  
Blocking buffer: 3% nonfat dry milk in TBST.  
Detection: ECL Basic Kit (RM00020).  
Exposure time: 90s.



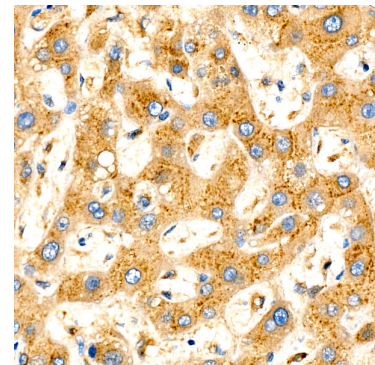
Western blot analysis of lysates from Rat liver using SMPD1 Rabbit mAb (A23894) at 1:1000 dilution incubated overnight at 4°C.  
Secondary antibody: HRP-conjugated Goat anti-Rabbit IgG (H+L) (AS014) at 1:10000 dilution.  
Lysates/proteins: 25µg per lane.  
Blocking buffer: 3% nonfat dry milk in TBST.  
Detection: ECL Basic Kit (RM00020).  
Exposure time: 90s.



Confocal imaging of frozen sections Rat liver tissue using [KO Validated] SMPD1 Rabbit mAb (A23894, dilution 1:200) followed by a further incubation with Cy3-conjugated Goat anti-Rabbit IgG (H+L) (AS007, dilution 1:500) (Red). DAPI was used for nuclear staining (Blue). Microwave antigen retrieval performed with 0.01M Citrate Buffer (pH 6.0) prior to IF staining. Objective: 40x.



Immunohistochemistry analysis of paraffin-embedded Human brain using [KO Validated] SMPD1 Rabbit mAb (A23894) at dilution of 1:100 (40x lens). High pressure antigen retrieval performed with 0.01M Citrate buffer (pH 6.0) prior to IHC staining.



Immunohistochemistry analysis of paraffin-embedded Human liver using [KO Validated] SMPD1 Rabbit mAb (A23894) at dilution of 1:100 (40x lens). High pressure antigen retrieval performed with 0.01M Citrate buffer (pH 6.0) prior to IHC staining.