

# PD-1/CD279 Rabbit pAb

Catalog No.: A23886 **1 Publications**

## Basic Information

**Observed MW**

61kDa

**Calculated MW**

32kDa

**Category**

Primary antibody

**Applications**

WB, IF-P, ELISA

**Cross-Reactivity**

Mouse

## Background

Involved in negative regulation of immune response. Acts upstream of or within negative regulation of apoptotic process; negative regulation of tolerance induction; and positive regulation of apoptotic process. Located in external side of plasma membrane. Is expressed in retina. Used to study dilated cardiomyopathy and systemic lupus erythematosus. Human ortholog(s) of this gene implicated in autoimmune disease (multiple); hepatitis B; hepatitis C; hepatocellular carcinoma; and lupus nephritis. Orthologous to human PDCD1 (programmed cell death 1).

## Recommended Dilutions

**WB** 1:500 - 1:1000**IF-P** 1:100 - 1:200**ELISA** Recommended starting concentration is 1 µg/mL. Please optimize the concentration based on your specific assay requirements.

## Immunogen Information

**Gene ID**

18566

**Swiss Prot**

Q02242

**Immunogen**

Recombinant protein (or fragment). This information is considered to be commercially sensitive.

**Synonyms**

PD-1; Pdc1; Ly101; PD-1/CD279

## Contact

 | 400-999-6126 | [cn.market@abclonal.com.cn](mailto:cn.market@abclonal.com.cn) | [www.abclonal.com.cn](http://www.abclonal.com.cn)

## Product Information

**Source**

Rabbit

**Isotype**

IgG

**Purification**

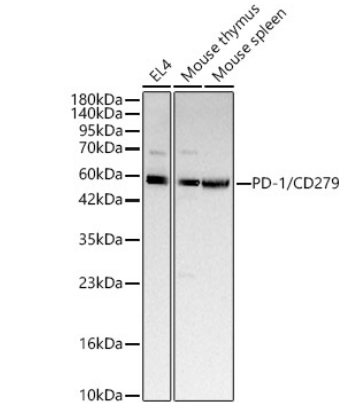
Affinity purification

**Storage**

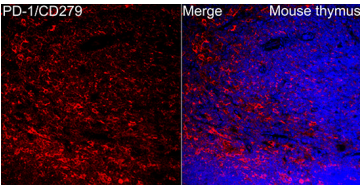
Store at -20°C. Avoid freeze / thaw cycles.

Buffer: PBS containing 50% glycerol, preserved with proclin300 or sodium azide (as specified on the Certificate of Analysis), pH 7.3.

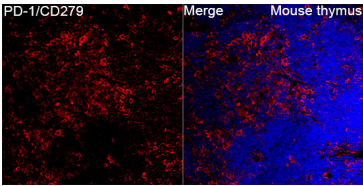
Validation Data



Western blot analysis of various lysates, using PD-1/CD279 Rabbit pAb (A23886) at 1:400 dilution.  
Secondary antibody: HRP-conjugated Goat anti-Rabbit IgG (H+L) (AS014) at 1:10000 dilution.  
Lysates/proteins: 25µg per lane.  
Blocking buffer: 3% nonfat dry milk in TBST.  
Detection: ECL Basic Kit (RM00020).  
Exposure time: 1s.



Immunofluorescence analysis of Mouse thymus tissue using PD-1/CD279 Rabbit pAb (A23886) at a dilution of 1:50 (40x lens).  
Secondary antibody: Cy3-conjugated Goat anti-Rabbit IgG (H+L)(AS007) at 1:500 dilution. Blue: DAPI for nuclear staining. High pressure antigen retrieval performed with 0.01M Citrate Buffer (pH 6.0) prior to IF staining.



Immunofluorescence analysis of Mouse thymus tissue using PD-1/CD279 Rabbit pAb (A23886) at a dilution of 1:100 (40x lens).  
Secondary antibody: Cy3-conjugated Goat anti-Rabbit IgG (H+L)(AS007) at 1:500 dilution. Blue: DAPI for nuclear staining. High pressure antigen retrieval performed with 0.01M Citrate Buffer (pH 6.0) prior to IF staining.