

TIMM17A Rabbit pAb

Catalog No.: A23858

Basic Information

Observed MW

18kDa

Calculated MW

18kDa

Category

Primary antibody

Applications

ELISA, WB

Cross-Reactivity

Mouse

Background

Predicted to contribute to protein transmembrane transporter activity. Predicted to be involved in protein import into mitochondrial matrix. Located in mitochondrial inner membrane and nucleoplasm. Is integral component of mitochondrial inner membrane. Part of TIM23 mitochondrial import inner membrane translocase complex.

Recommended Dilutions

WB 1:500 - 1:1000

Immunogen Information

Gene ID

10440

Swiss Prot

Q99595

Immunogen

A synthetic peptide corresponding to a sequence within amino acids 72-171 of human TIMM17A(NP_006326.1).

Synonyms

TIM17; TIM17A; TIMM17A

Contact

☎ | 400-999-6126

✉ | cn.market@abclonal.com.cn

🌐 | www.abclonal.com.cn

Product Information

Source

Rabbit

Isotype

IgG

Purification

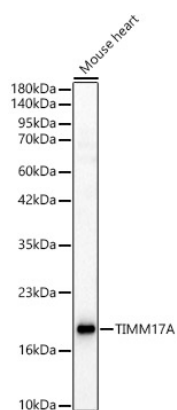
Affinity purification

Storage

Store at -20°C. Avoid freeze / thaw cycles.

Buffer: PBS with 0.05% proclin300, 50% glycerol, pH7.3.

Validation Data



Western blot analysis of lysates from Mouse heart, using TIMM17A Rabbit pAb (A23858) at 1:500 dilution.
Secondary antibody: HRP Goat Anti-Rabbit IgG (H+L) (AS014) at 1:10000 dilution.
Lysates/proteins: 25ug per lane.
Blocking buffer: 3% nonfat dry milk in TBST.
Detection: ECL Enhanced Kit (RM00021).
Exposure time: 30s.