

# ABflo® 647 Rabbit anti-Human CD262/DR5/TRAIL-R2 mAb

Catalog No.: A23853

## Basic Information

### Observed MW

### Calculated MW

12kDa/45kDa/47kDa

### Category

Primary antibody

### Applications

FC

### Cross-Reactivity

Human

### CloneNo number

ARC61149

### Conjugate

ABflo® 647. Ex:648nm. Em:664nm.

## Recommended Dilutions

FC 5 µl per 10<sup>6</sup> cells in  
100 µl volume

## Background

The protein encoded by this gene is a member of the TNF-receptor superfamily, and contains an intracellular death domain. This receptor can be activated by tumor necrosis factor-related apoptosis inducing ligand (TNFSF10/TRAIL/APO-2L), and transduces an apoptosis signal. Studies with FADD-deficient mice suggested that FADD, a death domain containing adaptor protein, is required for the apoptosis mediated by this protein. Two transcript variants encoding different isoforms and one non-coding transcript have been found for this gene.

## Immunogen Information

### Gene ID

8795

### Swiss Prot

O14763

### Immunogen

Recombinant protein (or fragment). This information is considered to be commercially sensitive.

### Synonyms

TNFRSF10B; CD262; DR5; KILLER; KILLER/DR5; TRAIL-R2; TRAILR2; TRICK2; TRICK2A; TRICK2B; TRICKB; ZTNFR9; TNF receptor superfamily member 10b

## Contact

 | 400-999-6126

 | [cn.market@abclonal.com.cn](mailto:cn.market@abclonal.com.cn)

 | [www.abclonal.com.cn](http://www.abclonal.com.cn)

## Product Information

### Source

Rabbit

### Isotype

IgG

### Purification

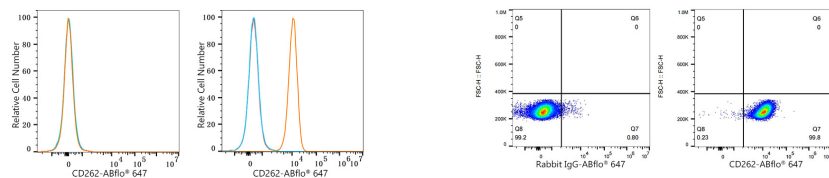
Affinity purification

### Storage

Store at 2-8°C. Avoid freeze.

Buffer: PBS containing 0.2% BSA, preserved with proclin300 or sodium azide (as specified on the Certificate of Analysis), pH 7.3.

## Validation Data



Flow cytometry:  $1 \times 10^6$  HEL cells (negative control, left) and HeLa cells (right) were surface-stained with ABflo® 647 Rabbit anti-Human CD262/DR5/TRAILR2 mAb (A23853,5  $\mu$ l/Test, orange line) or ABflo® 647 Rabbit IgG isotype control (A22070,5  $\mu$ l/Test, blue line). Non-fluorescently stained cells were used as blank control (red line).

Flow cytometry:  $1 \times 10^6$  HeLa cells were surface-stained with ABflo® 647 Rabbit IgG isotype control (A22070,5  $\mu$ l/Test, left) or ABflo® 647 Rabbit anti-Human CD262/DR5/TRAILR2 mAb (A23853,5  $\mu$ l/Test, right).