

BRRF2 Rabbit mAb

Catalog No.: A23843 **Recombinant**

Basic Information

Observed MW

72 kDa

Calculated MW

56KDa

Category

Primary antibody

Applications

WB,IF/ICC,ELISA

Cross-Reactivity

Epstein-Barr virus

CloneNo number

ARC61622

Background

Recommended Dilutions

WB 1:1000 - 1:5000

IF/ICC 1:50 - 1:200

ELISA Recommended starting concentration is 1 µg/mL. Please optimize the concentration based on your specific assay requirements.

Immunogen Information

Gene ID

3783729

Swiss Prot

P03210

Immunogen

Recombinant protein (or fragment). This information is considered to be commercially sensitive.

Synonyms

Contact

☎ | 400-999-6126

✉ | cn.market@abclonal.com.cn

🌐 | www.abclonal.com.cn

Product Information

Source

Rabbit

Isotype

IgG

Purification

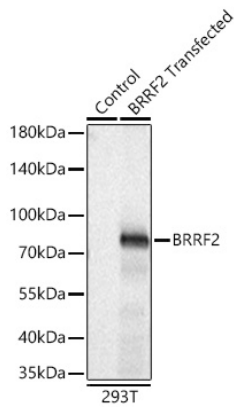
Affinity purification

Storage

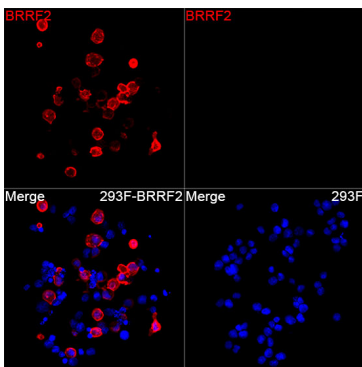
Store at -20°C. Avoid freeze / thaw cycles.

Buffer: PBS containing 50% glycerol and 0.05% BSA, preserved with proclin300 or sodium azide (as specified on the Certificate of Analysis), pH 7.3.

Validation Data



Western blot analysis of lysates from wild type (WT) and 293T cells transfected with BRRF2 using BRRF2 Rabbit mAb (A23843) at 1:5000 dilution incubated overnight at 4°C.
Secondary antibody: () at 1:10000 dilution.
Lysates/proteins: 20 µg per lane.
Blocking buffer: 3% nonfat dry milk in TBST.
Detection: ECL Basic Kit (RM00020)
.Exposure time: 0.5 s.



Immunofluorescence analysis of 293T cells transfected with BRRF2 using BRRF2 Rabbit mAb (A23843) at a dilution of 1:100 (40x lens). Secondary antibody: Cy3-conjugated Goat anti-Rabbit IgG (H+L)(AS007) at 1:500 dilution. Blue: DAPI for nuclear staining.