

ABflo® 594 Rabbit anti-Mouse CD97 mAb

Catalog No.: A23823

Basic Information

Observed MW

Calculated MW

90KDa

Category

Primary antibody

Applications

FC

Cross-Reactivity

Mouse

CloneNo number

ARC62048

Conjugate

ABflo® 594. Ex:588nm. Em:604nm.

Recommended Dilutions

FC 5 µl per 10⁶ cells in
100 µl volume

Background

Predicted to enable G protein-coupled receptor activity and chondroitin sulfate binding activity. Acts upstream of or within positive regulation of synapse assembly. Located in external side of plasma membrane. Is expressed in several structures, including central nervous system; eye; genitourinary system; gut; and immune system. Human ortholog(s) of this gene implicated in vibratory urticaria. Orthologous to several human genes including ADGRE5 (adhesion G protein-coupled receptor E5).

Immunogen Information

Gene ID

26364

Swiss Prot

Q9Z0M6

Immunogen

Recombinant protein (or fragment). This information is considered to be commercially sensitive.

Synonyms

Cd97; TM7LN1

Contact

☎ | 400-999-6126

✉ | cn.market@abclonal.com.cn

🌐 | www.abclonal.com.cn

Product Information

Source

Rabbit

Isotype

IgG

Purification

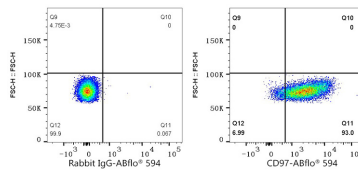
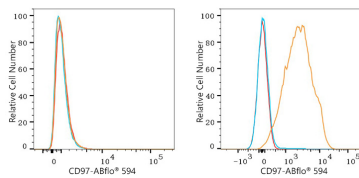
Affinity purification

Storage

Store at 2-8°C. Avoid freeze.

Buffer: PBS containing 0.2% BSA, preserved with proclin300 or sodium azide (as specified on the Certificate of Analysis), pH 7.3.

Validation Data



Flow cytometry: 1×10^6 NTERA-2 cells (negative control, left) and C57BL/6 mouse Splenocytes (right) were surface-stained with ABflo® 594 Rabbit anti-Mouse CD97 mAb (A23823, 5 μ l/Test, orange line) or ABflo® 594 Rabbit IgG isotype control (A23821, 5 μ l/Test, blue line). Non-fluorescently stained cells were used as blank control (red line).

Flow cytometry: 1×10^6 C57BL/6 mouse Splenocytes cells were surface-stained with ABflo® 594 Rabbit IgG isotype control (A23821, 5 μ l/Test, left) or ABflo® 594 Rabbit anti-Mouse CD97 mAb (A23823, 5 μ l/Test, right).