

# ABflo® 647 Rabbit anti-Human CD119/IFNGR1 mAb

Catalog No.: A23817

1 Publications

## Basic Information

### Observed MW

### Calculated MW

21kDa/54kDa

### Category

Primary antibody

### Applications

FC

### Cross-Reactivity

Human

### CloneNo number

ARC59337

### Conjugate

ABflo® 647. Ex:648nm. Em:664nm.

## Background

This gene (IFNGR1) encodes the ligand-binding chain (alpha) of the gamma interferon receptor. Human interferon-gamma receptor is a heterodimer of IFNGR1 and IFNGR2. A genetic variation in IFNGR1 is associated with susceptibility to Helicobacter pylori infection. In addition, defects in IFNGR1 are a cause of mendelian susceptibility to mycobacterial disease, also known as familial disseminated atypical mycobacterial infection.

## Recommended Dilutions

FC 5 µl per 10<sup>6</sup> cells in  
100 µl volume

## Immunogen Information

### Gene ID

3459

### Swiss Prot

P15260

### Immunogen

Recombinant protein (or fragment). This information is considered to be commercially sensitive.

### Synonyms

IFNGR1; CD119; IFNGR; IMD27A; IMD27B; interferon gamma receptor 1

## Contact

☎ | 400-999-6126

✉ | [cn.market@abclonal.com.cn](mailto:cn.market@abclonal.com.cn)

🌐 | [www.abclonal.com.cn](http://www.abclonal.com.cn)

## Product Information

### Source

Rabbit

### Isotype

IgG

### Purification

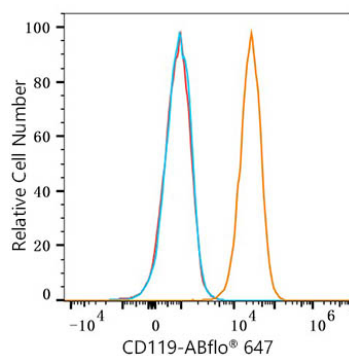
Affinity purification

### Storage

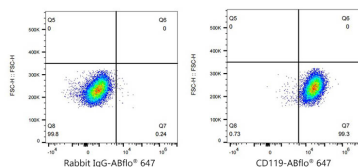
Store at 2-8°C. Avoid freeze.

Buffer: PBS containing 0.2% BSA, preserved with proclin300 or sodium azide (as specified on the Certificate of Analysis), pH 7.3.

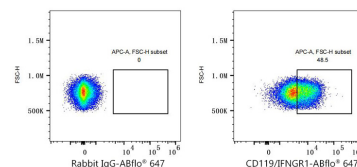
## Validation Data



Flow cytometry:  $1 \times 10^6$  HepG2 cells were surface-stained with ABflo® 647 Rabbit anti-Human CD119/IFNGR1 mAb(A23817,5  $\mu$ l/Test,orange line) or ABflo® 647 Rabbit IgG isotype control (A22070,5  $\mu$ l/Test,blue line).Non-fluorescently stained HepG2 cells were used as blank control (red line).



Flow cytometry: $1 \times 10^6$  HepG2 cells were surface-stained with ABflo® 647 Rabbit IgG isotype control (A22070,5  $\mu$ l/Test,left) or ABflo® 647 Rabbit anti-Human CD119/IFNGR1 mAb(A23817,5  $\mu$ l/Test,right).



Flow cytometry:  $1 \times 10^6$  Human PBMC were surface-stained with ABflo® 647 Rabbit IgG isotype control (A22070,5  $\mu$ l/Test,left) or ABflo® 647 Rabbit anti-Human CD119/IFNGR1 mAb (A23817,5  $\mu$ l/Test,right).