

ABflo® 488 Rabbit anti-Human CD119/IFNGR1 mAb

Catalog No.: A23816

Basic Information

Observed MW

Calculated MW

21kDa/54kDa

Category

Primary antibody

Applications

FC

Cross-Reactivity

Human

CloneNo number

ARC59337

Conjugate

ABflo® 488. Ex:491nm. Em:516nm.

Recommended Dilutions

FC 5 µl per 10⁶ cells in
100 µl volume

Background

This gene (IFNGR1) encodes the ligand-binding chain (alpha) of the gamma interferon receptor. Human interferon-gamma receptor is a heterodimer of IFNGR1 and IFNGR2. A genetic variation in IFNGR1 is associated with susceptibility to Helicobacter pylori infection. In addition, defects in IFNGR1 are a cause of mendelian susceptibility to mycobacterial disease, also known as familial disseminated atypical mycobacterial infection.

Immunogen Information

Gene ID

3459

Swiss Prot

P15260

Immunogen

Recombinant protein (or fragment). This information is considered to be commercially sensitive.

Synonyms

IFNGR1; CD119; IFNGR; IMD27A; IMD27B; interferon gamma receptor 1

Contact

☎ | 400-999-6126

✉ | cn.market@abclonal.com.cn

🌐 | www.abclonal.com.cn

Product Information

Source

Rabbit

Isotype

IgG

Purification

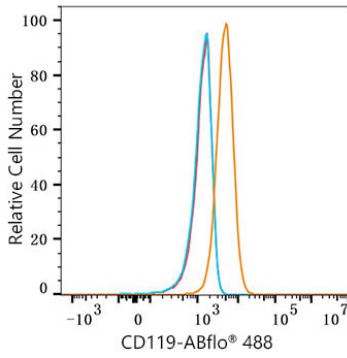
Affinity purification

Storage

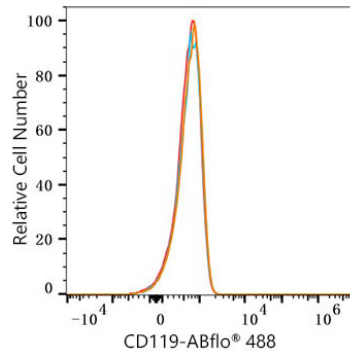
Store at 2-8°C. Avoid freeze.

Buffer: PBS containing 0.2% BSA, preserved with proclin300 or sodium azide (as specified on the Certificate of Analysis), pH 7.3.

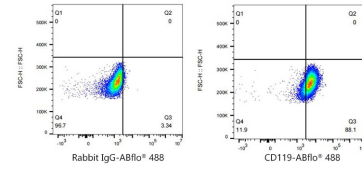
Validation Data



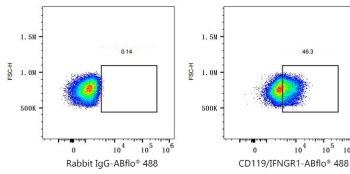
Flow cytometry: 1×10^6 HepG2 cells were surface-stained with ABflo® 488 Rabbit anti-Human CD119/IFNGR1 mAb(A23816,5 μ l/Test,orange line) or ABflo® 488 Rabbit IgG isotype control (A22069,5 μ l/Test,blue line).Non-fluorescently stained HepG2 cells were used as blank control (red line).



Flow cytometry: 1×10^6 CHO cells(negative control) were surface-stained with ABflo® 488 Rabbit anti-Human CD119/IFNGR1 mAb(A23816,5 μ l/Test,orange line) or ABflo® 488 Rabbit IgG isotype control (A22069,5 μ l/Test,blue line).Non-fluorescently stained CHO cells were used as blank control (red line).



Flow cytometry: 1×10^6 HepG2 cells were surface-stained with ABflo® 488 Rabbit IgG isotype control (A22069,5 μ l/Test,left) or ABflo® 488 Rabbit anti-Human CD119/IFNGR1 mAb(A23816,5 μ l/Test,right).



Flow cytometry: 1×10^6 Human PBMC were surface-stained with ABflo® 488 Rabbit IgG isotype control (A22069,5 μ l/Test,left) or ABflo® 488 Rabbit anti-Human CD119/IFNGR1 mAb (A23816,5 μ l/Test,right).