

ABflo® 488 Rabbit anti-Mouse ICOS/CD278 mAb

Catalog No.: A23813

Basic Information

Observed MW

Calculated MW

22KDa

Category

Primary antibody

Applications

FC

Cross-Reactivity

Mouse

CloneNo number

ARC62052-ABflo488

Conjugate

ABflo® 488. Ex:491nm. Em:516nm.

Background

Predicted to be involved in T cell costimulation; T cell tolerance induction; and cell-cell adhesion. Located in external side of plasma membrane. Is integral component of plasma membrane. Used to study common variable immunodeficiency. Human ortholog(s) of this gene implicated in celiac disease; common variable immunodeficiency; and immunoglobulin alpha deficiency. Orthologous to human ICOS (inducible T cell costimulator).

Recommended Dilutions

FC 5 µl per 10⁶ cells in
100 µl volume

Immunogen Information

Gene ID

54167

Swiss Prot

Q9WVS0

Immunogen

Recombinant fusion protein containing a sequence corresponding to amino acids 21-142 of mouse ICOS/CD278(NP_059508.2).

Synonyms

H4; CCLP; AILIM; CRP-1; Ly115

Contact

☎ | 400-999-6126

✉ | cn.market@abclonal.com.cn

🌐 | www.abclonal.com.cn

Product Information

Source

Rabbit

Isotype

IgG

Purification

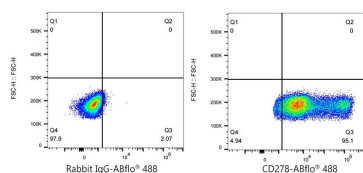
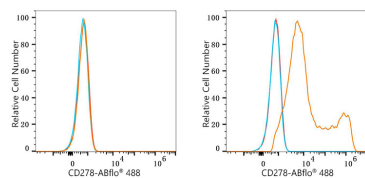
Affinity purification

Storage

Store at 2-8°C. Avoid freeze.

Buffer: PBS with 0.03% proclin300,0.2% BSA,pH7.3.

Validation Data



Flow cytometry: 1×10^6 CHO cells (negative control, left) and CHO (Transfection, right) cells were surface-stained with ABflo® 488 Rabbit anti-Mouse ICOS/CD278 mAb (A23813, 5 μ l/Test, orange line) or ABflo® 488 Rabbit IgG isotype control (A22069, 5 μ l/Test, blue line). Non-fluorescently stained cells were used as blank control (red line).

Flow cytometry: 1×10^6 CHO (Transfection) cells were surface-stained with ABflo® 488 Rabbit IgG isotype control (A22069, 5 μ l/Test, left) or ABflo® 488 Rabbit anti-Mouse ICOS/CD278 mAb (A23813, 5 μ l/Test, right).