

# ABflo® 647 Rabbit anti-Human CD79b mAb

Catalog No.: A23802

## Basic Information

### Observed MW

### Calculated MW

14kDa/26kDa

### Category

Primary antibody

### Applications

IF/ICC,FC

### Cross-Reactivity

Human

### CloneNo number

ARC61823

### Conjugate

ABflo® 647. Ex:648nm. Em:664nm.

## Recommended Dilutions

IF/ICC 1:50 - 1:200

FC 5 µl per 10<sup>6</sup> cells in  
100 µl volume

## Background

The B lymphocyte antigen receptor is a multimeric complex that includes the antigen-specific component, surface immunoglobulin (Ig). Surface Ig non-covalently associates with two other proteins, Ig-alpha and Ig-beta, which are necessary for expression and function of the B-cell antigen receptor. This gene encodes the Ig-beta protein of the B-cell antigen component. Alternatively spliced transcript variants encoding different isoforms have been described.

## Immunogen Information

### Gene ID

974

### Swiss Prot

P40259

### Immunogen

Recombinant protein (or fragment). This information is considered to be commercially sensitive.

### Synonyms

CD79B; AGM6; B29; IGB; CD79b molecule

## Contact

☎ | 400-999-6126

✉ | [cn.market@abclonal.com.cn](mailto:cn.market@abclonal.com.cn)

🌐 | [www.abclonal.com.cn](http://www.abclonal.com.cn)

## Product Information

### Source

Rabbit

### Isotype

IgG

### Purification

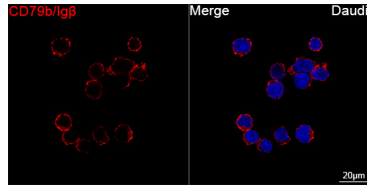
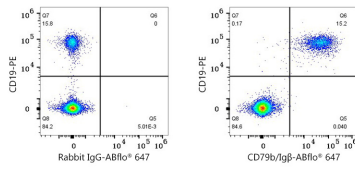
Affinity purification

### Storage

Store at 2-8°C. Avoid freeze.

Buffer: PBS containing 0.2% BSA, preserved with proclin300 or sodium azide (as specified on the Certificate of Analysis), pH 7.3.

## Validation Data



Flow cytometry:  $1 \times 10^6$  Human PBMC were surface-stained with PE Mouse anti-Human CD19 mAb (A22816, 10 µl/Test) and ABflo® 647 Rabbit IgG isotype control (A22070, 5 µl/Test, left) or ABflo® 647 Rabbit anti-Human CD79b/Igβ mAb (A23802, 5 µl/Test, right). Cells in the lymphocyte gate were used for analysis.

Confocal imaging of Daudi cells using ABflo® 647 Rabbit anti-Human CD79b/Igβ mAb (A23802, dilution 1:50) (Red). DAPI was used for nuclear staining (Blue). Objective: 100x.