

CD79B Rabbit mAb

Catalog No.: A23790 **Recombinant**

Basic Information

Observed MW

40kDa

Calculated MW

14kDa/26kDa

Category

Primary antibody

Applications

WB,IF/ICC,FC,ELISA

Cross-Reactivity

Human

CloneNo number

ARC61823

Background

The B lymphocyte antigen receptor is a multimeric complex that includes the antigen-specific component, surface immunoglobulin (Ig). Surface Ig non-covalently associates with two other proteins, Ig-alpha and Ig-beta, which are necessary for expression and function of the B-cell antigen receptor. This gene encodes the Ig-beta protein of the B-cell antigen component. Alternatively spliced transcript variants encoding different isoforms have been described.

Recommended Dilutions

WB 1:500 - 1:1000

IF/ICC 1:50 - 1:200

FC 1:500 - 1:1000

ELISA Recommended starting concentration is 1 µg/mL. Please optimize the concentration based on your specific assay requirements.

Immunogen Information

Gene ID

974

Swiss Prot

P40259

Immunogen

Recombinant protein (or fragment). This information is considered to be commercially sensitive.

Synonyms

CD79B; AGM6; B29; IGB; CD79b molecule

Contact

☎ | 400-999-6126

✉ | cn.market@abclonal.com.cn

🌐 | www.abclonal.com.cn

Product Information

Source

Rabbit

Isotype

IgG

Purification

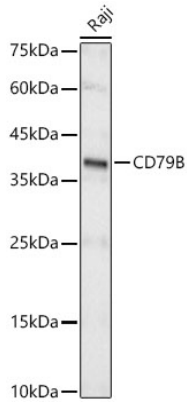
Affinity purification

Storage

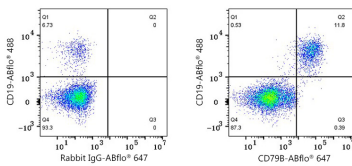
Store at -20°C. Avoid freeze / thaw cycles.

Buffer: PBS containing 50% glycerol and 0.05% BSA, preserved with proclin300 or sodium azide (as specified on the Certificate of Analysis), pH 7.3.

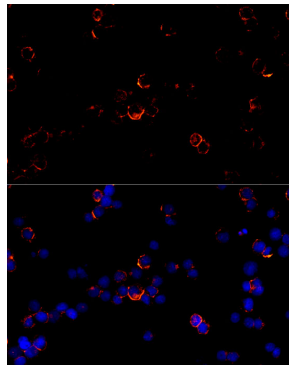
Validation Data



Western blot analysis of lysates from Raji cells, using CD79B Rabbit mAb (A23790) at 1:1000 dilution. Secondary antibody: HRP-conjugated Goat anti-Rabbit IgG (H+L) (AS014) at 1:10000 dilution. Lysates/proteins: 25µg per lane. Blocking buffer: 3% nonfat dry milk in TBST. Detection: ECL Basic Kit (RM00020). Exposure time: 10s.



Flow cytometry: 1X10⁶ Human PBMC were surface-stained with ABflo® 488 Rabbit anti-Human/Monkey CD19 mAb (A23008, 5 µl/Test) and Rabbit IgG isotype control (AC042, 2µg/mL, left) or CD79B Rabbit mAb (A23790, 2µg/mL, right), followed by Alexa Fluor® 647 conjugated goat anti-rabbit pAb staining. Cells in the lymphocyte gate were used for analysis.



Immunofluorescence analysis of Daudi cells using CD79B Rabbit mAb (A23790) at dilution of 1:200 (40x lens). Secondary antibody: Cy3-conjugated Goat anti-Rabbit IgG (H+L) (AS007) at 1:500 dilution. Blue: DAPI for nuclear staining.