

# GABARAPL1 Rabbit mAb

Catalog No.: A23781 **Recombinant**

## Basic Information

### Observed MW

16-18kDa

### Calculated MW

14kDa/17kDa

### Category

Primary antibody

### Applications

WB, IHC-P, ELISA

### Cross-Reactivity

Human, Mouse, Rat

### CloneNo number

ARC61739

## Background

Enables Tat protein binding activity and ubiquitin protein ligase binding activity. Predicted to be involved in autophagosome assembly; autophagy of mitochondrion; and cellular response to nitrogen starvation. Located in autophagosome. Colocalizes with mitochondrion.

## Recommended Dilutions

**WB** 1:1000 - 1:2000

**IHC-P** 1:100 - 1:500

**ELISA** Recommended starting concentration is 1 µg/mL. Please optimize the concentration based on your specific assay requirements.

## Immunogen Information

### Gene ID

23710

### Swiss Prot

Q9H0R8

### Immunogen

Synthetic peptide. This information is considered to be commercially sensitive.

### Synonyms

GABARAPL1; APG8-LIKE; APG8L; ATG8; ATG8B; ATG8L; GEC1; GABA type A receptor associated protein like 1

## Contact

☎ | 400-999-6126

✉ | [cn.market@abclonal.com.cn](mailto:cn.market@abclonal.com.cn)

🌐 | [www.abclonal.com.cn](http://www.abclonal.com.cn)

## Product Information

### Source

Rabbit

### Isotype

IgG

### Purification

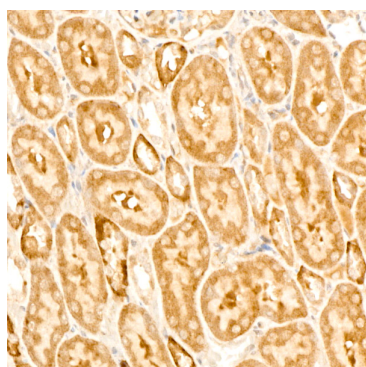
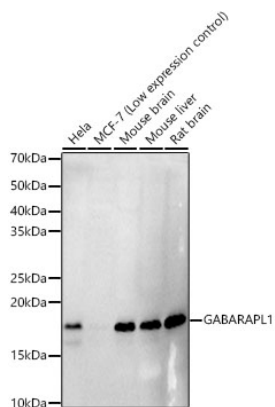
Affinity purification

### Storage

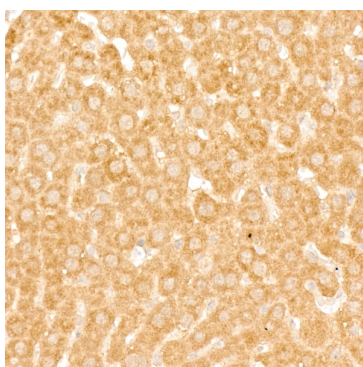
Store at -20°C. Avoid freeze / thaw cycles.

Buffer: PBS containing 50% glycerol and 0.05% BSA, preserved with proclin300 or sodium azide (as specified on the Certificate of Analysis), pH 7.3.

## Validation Data



Immunohistochemistry analysis of paraffin-embedded Rat kidney using GABARAPL1 Rabbit mAb (A23781) at dilution of 1:300 (40x lens). High pressure antigen retrieval performed with 0.01M Citrate buffer (pH 6.0) prior to IHC staining.



Immunohistochemistry analysis of paraffin-embedded Rat liver using GABARAPL1 Rabbit mAb (A23781) at dilution of 1:300 (40x lens). High pressure antigen retrieval performed with 0.01M Citrate buffer (pH 6.0) prior to IHC staining.