

Gasdermin D (Full Length+C terminal) Rabbit mAb

Catalog No.: A23755 **Recombinant**

Basic Information

Observed MW

23kDa/53kDa

Calculated MW

53KDa

Category

Primary antibody

Applications

WB,ELISA

Cross-Reactivity

Human

CloneNo number

ARC61812

Background

Gasdermin D is a member of the gasdermin family. Members of this family appear to play a role in regulation of epithelial proliferation. Gasdermin D has been suggested to act as a tumor suppressor. Alternatively spliced transcript variants have been described.

Recommended Dilutions

WB 1:2000 - 1:12000

ELISA Recommended starting concentration is 1 µg/mL. Please optimize the concentration based on your specific assay requirements.

Immunogen Information

Gene ID

79792

Swiss Prot

P57764

Immunogen

Recombinant protein (or fragment). This information is considered to be commercially sensitive.

Synonyms

DF5L; DFNA5L; FKSG10; GSDMDC1; Gasdermin D (Full Length+C terminal)

Contact

☎ | 400-999-6126

✉ | cn.market@abclonal.com.cn

🌐 | www.abclonal.com.cn

Product Information

Source

Rabbit

Isotype

IgG

Purification

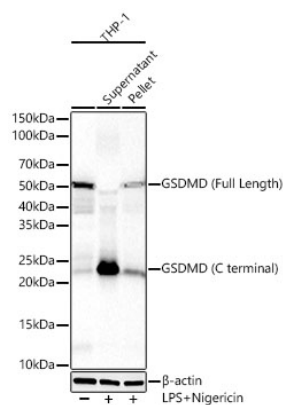
Affinity purification

Storage

Store at -20°C. Avoid freeze / thaw cycles.

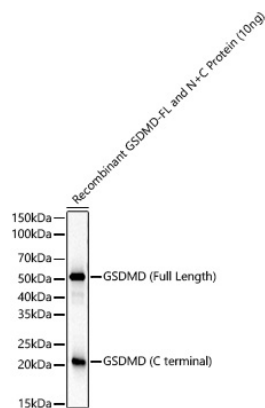
Buffer: PBS with 0.09% Sodium azide, 0.05% BSA, 50% glycerol, pH7.3.

Validation Data



Western blot analysis of lysates from THP-1 cells using GSDMD (Full Length+C terminal) Rabbit mAb (A23755) at 1:2000 dilution. THP-1 cells were treated with LPS and Nigericin. Secondary antibody: HRP-conjugated Goat anti-Rabbit IgG (H+L) (AS014) at 1:10000 dilution. Lysates/proteins: 25 µg per lane. Blocking buffer: 3% nonfat dry milk in TBST. Detection: ECL Basic Kit (RM00020). Exposure time: 30s.

WB samples for antibody validation are kindly provided by Dr. Feng Shao, NIBS



Western blot analysis of recombinant GSDMD Protein using GSDMD (Full Length+C terminal) Rabbit mAb (A23755) at 1:2000 dilution. Secondary antibody: HRP-conjugated Goat anti-Rabbit IgG (H+L) (AS014) at 1:10000 dilution. Lysates/proteins: 10 ng per lane. Blocking buffer: 3% nonfat dry milk in TBST. Detection: ECL Basic Kit (RM00020). Exposure time: 10s.

WB samples for antibody validation are kindly provided by Dr. Feng Shao, NIBS