

PE Rabbit anti-Human CD146 mAb

Catalog No.: A23748

Basic Information

Observed MW

Calculated MW

57kDa/71kDa

Category

Primary antibody

Applications

FC

Cross-Reactivity

Human

CloneNo number

ARC56715

Conjugate

PE. Ex:565nm. Em:574nm.

Recommended Dilutions

FC 5 μ l per 10^6 cells in
100 μ l volume

Background

Melanoma cell adhesion molecule (MCAM, MUC18, CD146) is an immunoglobulin superfamily member originally described as a cell surface adhesion protein and marker of the progression and metastasis of melanoma. Expression of MCAM protein is seen in vascular endothelial cells, activated T lymphocytes, smooth muscle, and bone marrow stromal cells. Research studies demonstrate increased MCAM expression in endothelial cells from angiogenesis-related disorders, including inflammatory bowel disease, Crohn's disease, rheumatoid arthritis, tumors, and chronic renal failure. MCAM-expressing human mesenchymal stromal cells (hMSC) in the hematopoietic microenvironment are responsible for maintaining the self-renewal of hematopoietic stem and progenitor cells (HSPC) through direct contact between hMSC and HSPC. Related studies suggest that activation of the Notch signaling pathway may also, in part, play a role in HSPC maintenance. Additional research indicates that MCAM may play a role in multiple sclerosis, an autoimmune inflammatory disease that affects central nervous system neurons. Endothelial MCAM within the blood-brain barrier act as adhesion receptors that permit lymphocytes to transmigrate across the barrier and produce the inflammatory lesions that characterize the disorder.

Immunogen Information

Gene ID

4162

Swiss Prot

P43121

Immunogen

Recombinant protein (or fragment). This information is considered to be commercially sensitive.

Synonyms

MCAM; CD146; MUC18; cell surface glycoprotein MUC18

Contact

 | 400-999-6126

 | cn.market@abclonal.com.cn

 | www.abclonal.com.cn

Product Information

Source

Rabbit

Isotype

IgG

Purification

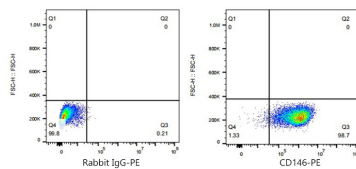
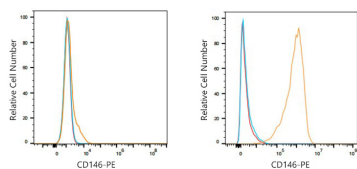
Affinity purification

Storage

Store at 2-8°C. Avoid freeze.

Buffer: PBS containing 0.2% BSA, preserved with proclin300 or sodium azide (as specified on the Certificate of Analysis), pH 7.3.

Validation Data



Flow cytometry: 1×10^6 MCF7 cells (negative control, left) and HUVEC (right) were surface-stained with PE Rabbit anti-Human CD146 mAb (A23748, 5 μ l/Test, orange line) or PE Rabbit IgG isotype control (5 μ l/Test, blue line). Non-fluorescently stained cells were used as blank control (red line).

Flow cytometry: 1×10^6 HUVEC cells were surface-stained with PE Rabbit IgG isotype control (5 μ l/Test, left) or PE Rabbit anti-Human CD146 mAb (A23748, 5 μ l/Test, right).