

ABflo® 647 Rabbit anti-Human CD80/B7-1 mAb

Catalog No.: A23730 **1 Publications**

Basic Information

Observed MW

Calculated MW

18kDa/29kDa/33kDa

Category

Primary antibody

Applications

FC

Cross-Reactivity

Human

CloneNo number

ARC61136

Conjugate

ABflo® 647. Ex:648nm. Em:664nm.

Recommended Dilutions

FC 5 µl per 10⁶ cells in
100 µl volume

Background

The protein encoded by this gene is a membrane receptor that is activated by the binding of CD28 or CTLA-4. The activated protein induces T-cell proliferation and cytokine production. This protein can act as a receptor for adenovirus subgroup B and may play a role in lupus neuropathy.

Immunogen Information

Gene ID

941

Swiss Prot

P33681

Immunogen

Recombinant protein (or fragment). This information is considered to be commercially sensitive.

Synonyms

CD80; B7; B7-1; B7.1; BB1; CD28LG; CD28LG1; LAB7; CD80 molecule

Contact

 | 400-999-6126

 | cn.market@abclonal.com.cn

 | www.abclonal.com.cn

Product Information

Source

Rabbit

Isotype

IgG

Purification

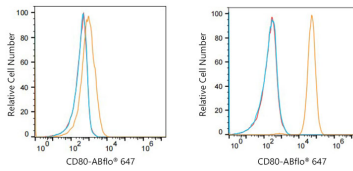
Affinity purification

Storage

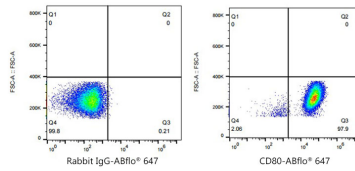
Store at 2-8°C. Avoid freeze.

Buffer: PBS containing 0.2% BSA, preserved with proclin300 or sodium azide (as specified on the Certificate of Analysis), pH 7.3.

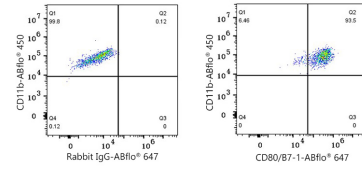
Validation Data



Flow cytometry: 1×10^6 293F cells (negative control, left) and Raji cells (right) were surface-stained with ABflo® 647 Rabbit anti-Human CD80/B7-1 mAb (A23730, 5 μ l/Test, orange line) or ABflo® 647 Rabbit IgG isotype control (A22070, 5 μ l/Test, blue line). Non-fluorescently stained cells were used as blank control (red line).



Flow cytometry: 1×10^6 Raji cells were surface-stained with ABflo® 647 Rabbit IgG isotype control (A22070, 5 μ l/Test, left) or ABflo® 647 Rabbit anti-Human CD80/B7-1 mAb (A23730, 5 μ l/Test, right).



Flow cytometry: 1×10^6 Human peripheral blood monocytes (treated with 20 ng/mL M-CSF for 7 days and then with 50 ng/mL IFN- γ and 100 ng/mL LPS for 3 days) were surface-stained with ABflo® 450 Mouse anti-Human CD11b mAb (A27475, 5 μ l/Test) and ABflo® 647 Rabbit IgG isotype control (A22070, 5 μ l/Test, left) or ABflo® 647 Rabbit anti-Human CD80/B7-1 mAb (A23730, 5 μ l/Test, right).