

# ABflo® 488 Rabbit anti-Mouse/Rat CD31/PECAM1 mAb

Catalog No.: A23701

## Basic Information

### Observed MW

### Calculated MW

69kDa/77kDa/80kDa/81kDa

### Category

Primary antibody

### Applications

FC

### Cross-Reactivity

Mouse, Rat

### CloneNo number

ARC61018

### Conjugate

ABflo® 488. Ex:491nm. Em:516nm.

## Recommended Dilutions

FC 5 µl per 10<sup>6</sup> cells in  
100 µl volume

## Background

Predicted to enable protein homodimerization activity; protein phosphatase binding activity; and transmembrane signaling receptor activity. Acts upstream of or within several processes, including Rho protein signal transduction; endothelial cell morphogenesis; and positive regulation of tyrosine phosphorylation of STAT protein. Located in several cellular components, including cell-cell contact zone; external side of plasma membrane; and smooth muscle contractile fiber. Is expressed in several structures, including alimentary system; cardiovascular system; central nervous system; extraembryonic component; and genitourinary system. Human ortholog(s) of this gene implicated in coronary artery disease (multiple); lung non-small cell carcinoma; neuroblastoma; and psoriatic arthritis. Orthologous to human PECAM1 (platelet and endothelial cell adhesion molecule 1).

## Immunogen Information

### Gene ID

18613

### Swiss Prot

Q08481

### Immunogen

Recombinant protein (or fragment). This information is considered to be commercially sensitive.

### Synonyms

Cd31; Pecam; PECAM-1

## Contact

☎ | 400-999-6126

✉ | [cn.market@abclonal.com.cn](mailto:cn.market@abclonal.com.cn)

🌐 | [www.abclonal.com.cn](http://www.abclonal.com.cn)

## Product Information

### Source

Rabbit

### Isotype

IgG

### Purification

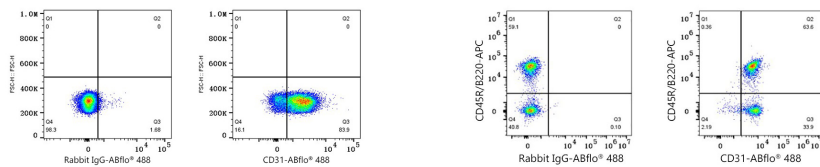
Affinity purification

### Storage

Store at 2-8°C. Avoid freeze.

Buffer: PBS containing 0.2% BSA, preserved with proclin300 or sodium azide (as specified on the Certificate of Analysis), pH 7.3.

## Validation Data



Flow cytometry:  $1 \times 10^6$  Rat splenocytes were surface-stained with ABflo® 488 Rabbit IgG isotype control (A22069,5  $\mu$ l/Test,left) or ABflo® 488 Rabbit anti-Mouse CD31 mAb (A23701,5  $\mu$ l/Test,right).

Flow cytometry:  $1 \times 10^6$  C57BL/6 mouse splenocytes were surface-stained with APC Rat anti-Mouse CD45R/B220 mAb (A27570,5  $\mu$ l/Test) and ABflo® 488 Rabbit IgG isotype control (A22069,5  $\mu$ l/Test,left) or ABflo® 488 Rabbit anti-Mouse CD31 mAb (A23701,5  $\mu$ l/Test,right).