

TLE4 Rabbit mAb

Catalog No.: A23693

Recombinant

1 Publications

Basic Information

Observed MW

84kDa

Calculated MW

84kDa

Category

Primary antibody

Applications

WB, ELISA

Cross-Reactivity

Human, Mouse

CloneNo number

ARC61324

Background

Predicted to enable transcription corepressor activity. Predicted to be involved in negative regulation of canonical Wnt signaling pathway. Predicted to act upstream of or within Wnt signaling pathway; cellular response to leukemia inhibitory factor; and negative regulation of transcription by RNA polymerase II. Located in nucleoplasm. Part of beta-catenin-TCF complex.

Recommended Dilutions

WB 1:500 - 1:2000

ELISA Recommended starting concentration is 1 µg/mL. Please optimize the concentration based on your specific assay requirements.

Immunogen Information

Gene ID

7091

Swiss Prot

Q04727

Immunogen

Recombinant protein (or fragment). This information is considered to be commercially sensitive.

Synonyms

ESG; BCE1; ESG4; GRG4; BCE-1; Grg-4; E(spl); E(spl); TLE4

Contact

☎ | 400-999-6126

✉ | cn.market@abclonal.com.cn

🌐 | www.abclonal.com.cn

Product Information

Source

Rabbit

Isotype

IgG

Purification

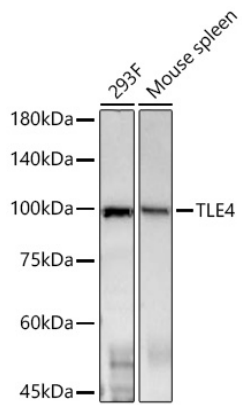
Affinity purification

Storage

Store at -20°C. Avoid freeze / thaw cycles.

Buffer: PBS containing 50% glycerol and 0.05% BSA, preserved with proclin300 or sodium azide (as specified on the Certificate of Analysis), pH 7.3.

Validation Data



Western blot analysis of various lysates using TLE4 Rabbit mAb (A23693) at 1:1000 dilution incubated overnight at 4°C.
Secondary antibody: HRP-conjugated Goat anti-Rabbit IgG (H+L) (AS014) at 1:10000 dilution.
Lysates/proteins: 25 µg per lane.
Blocking buffer: 3% nonfat dry milk in TBST.
Detection: ECL Basic Kit (RM00020).
Exposure time: 90s.