

CD31/PECAM1 Rabbit mAb

Catalog No.: A23691 **Recombinant**

Basic Information

Observed MW

110-130kDa

Calculated MW

81kDa

Category

Primary antibody

Applications

WB, FC, ELISA

Cross-Reactivity

Mouse, Rat

CloneNo number

ARC61018

Background

Predicted to enable protein homodimerization activity; protein phosphatase binding activity; and transmembrane signaling receptor activity. Acts upstream of or within several processes, including Rho protein signal transduction; endothelial cell morphogenesis; and positive regulation of tyrosine phosphorylation of STAT protein. Located in several cellular components, including cell-cell contact zone; external side of plasma membrane; and smooth muscle contractile fiber. Is expressed in several structures, including alimentary system; cardiovascular system; central nervous system; extraembryonic component; and genitourinary system. Human ortholog(s) of this gene implicated in coronary artery disease (multiple); lung non-small cell carcinoma; neuroblastoma; and psoriatic arthritis. Orthologous to human PECAM1 (platelet and endothelial cell adhesion molecule 1).

Recommended Dilutions

WB 1:500 - 1:1000**FC** 1:50 - 1:200

ELISA Recommended starting concentration is 1 µg/mL. Please optimize the concentration based on your specific assay requirements.

Immunogen Information

Gene ID

18613

Swiss Prot

Q08481

Immunogen

Recombinant protein (or fragment). This information is considered to be commercially sensitive.

Synonyms

Cd31; Pecam; PECAM-1; CD31/PECAM1

Contact

 | 400-999-6126 | cn.market@abclonal.com.cn | www.abclonal.com.cn

Product Information

Source

Rabbit

Isotype

IgG

Purification

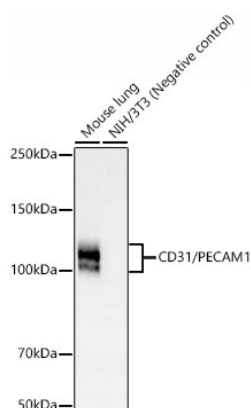
Affinity purification

Storage

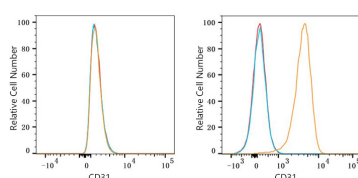
Store at -20°C. Avoid freeze / thaw cycles.

Buffer: PBS containing 50% glycerol and 0.05% BSA, preserved with proclin300 or sodium azide (as specified on the Certificate of Analysis), pH 7.3.

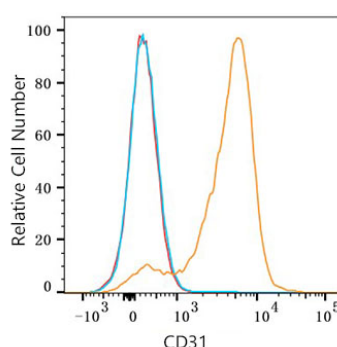
Validation Data



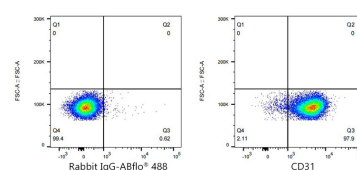
Western blot analysis of various lysates, using CD31/PECAM1 Rabbit mAb (A23691) at 1:900 dilution. Secondary antibody: HRP-conjugated Goat anti-Rabbit IgG (H+L) (AS014) at 1:10000 dilution. Lysates/proteins: 25µg per lane. Blocking buffer: 3% nonfat dry milk in TBST. Detection: ECL Basic Kit (RM00020). Exposure time: 180s.



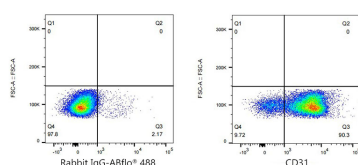
Flow cytometry: 1×10^6 NIH/3T3 cells (negative control, left) and C57BL/6 mouse Splenocytes (right) were surface-stained with CD31/PECAM1 Rabbit mAb (A23691, 2 µg/mL, orange line) or ABflo® 488 Rabbit IgG isotype control (A22069, 2 µg/mL, blue line). Non-fluorescently stained cells were used as blank control (red line).



Flow cytometry: 1×10^6 Rat Splenocytes were surface-stained with CD31/PECAM1 Rabbit mAb (A23691, 2 µg/mL, orange line) or ABflo® 488 Rabbit IgG isotype control (A22069, 2 µg/mL, blue line), followed by FITC conjugated goat anti-rabbit pAb (1:200 dilution) staining. Non-fluorescently stained Rat Splenocytes were used as blank control (red line).



Flow cytometry: 1×10^6 C57BL/6 mouse Splenocytes were surface-stained with ABflo® 488 Rabbit IgG isotype control (A22069, 2 µg/mL, left) or CD31/PECAM1 Rabbit mAb (A23691, 2 µg/mL, right).



Flow cytometry: 1×10^6 Rat Splenocytes were surface-stained with ABflo® 488 Rabbit IgG isotype control (A22069, 2 µg/mL, left) or CD31/PECAM1 Rabbit mAb (A23691, 2 µg/mL, right).