

# Icam1 Rabbit pAb

Catalog No.: A23661 **2 Publications**

## Basic Information

### Observed MW

102kDa

### Calculated MW

60kDa

### Category

Primary antibody

### Applications

WB,IF-P,ELISA

### Cross-Reactivity

Mouse, Rat

## Background

Enables integrin binding activity. Involved in several processes, including cellular response to cytokine stimulus; cellular response to lipid; and gonad development. Located in cell surface; extracellular space; and plasma membrane. Used to study diabetic angiopathy; mesenteric vascular occlusion; nephritis; pre-eclampsia; and uveitis. Biomarker of several diseases, including cerebrovascular disease (multiple); colitis (multiple); kidney failure (multiple); lung disease (multiple); and pancreatitis (multiple). Human ortholog(s) of this gene implicated in several diseases, including autoimmune disease (multiple); biliary atresia; diabetic retinopathy; inflammatory bowel disease (multiple); and liver cirrhosis. Orthologous to human ICAM1 (intercellular adhesion molecule 1).

## Recommended Dilutions

**WB** 1:500 - 1:1000

**IF-P** 1:50 - 1:200

**ELISA** Recommended starting concentration is 1 µg/mL. Please optimize the concentration based on your specific assay requirements.

## Immunogen Information

### Gene ID

25464

### Swiss Prot

Q00238

### Immunogen

Recombinant protein (or fragment). This information is considered to be commercially sensitive.

### Synonyms

CD54; ICAM; Icam1

## Contact

☎ | 400-999-6126

✉ | [cn.market@abclonal.com.cn](mailto:cn.market@abclonal.com.cn)

🌐 | [www.abclonal.com.cn](http://www.abclonal.com.cn)

## Product Information

### Source

Rabbit

### Isotype

IgG

### Purification

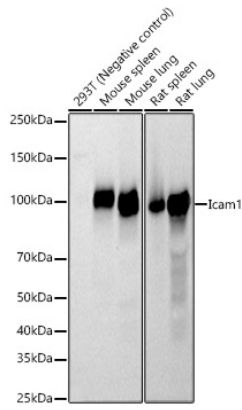
Affinity purification

### Storage

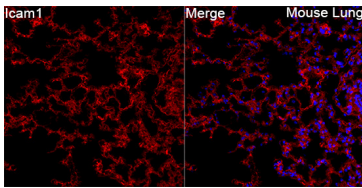
Store at -20°C. Avoid freeze / thaw cycles.

Buffer: PBS containing 50% glycerol, preserved with proclin300 or sodium azide (as specified on the Certificate of Analysis), pH 7.3.

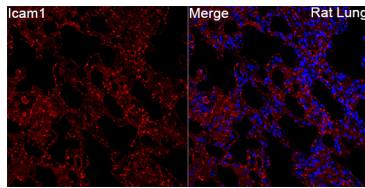
## Validation Data



Western blot analysis of various lysates, using Icam1 Rabbit pAb (A23661) at 1:1000 dilution. Secondary antibody: HRP-conjugated Goat anti-Rabbit IgG (H+L) (AS014) at 1:10000 dilution. Lysates/proteins: 25µg per lane. Blocking buffer: 3% nonfat dry milk in TBST. Detection: ECL Basic Kit (RM00020). Exposure time: 20s.



Immunofluorescence analysis of paraffin-embedded Mouse lung tissue using Icam1 Rabbit pAb (A23661) at a dilution of 1:100 (40x lens). Secondary antibody: Cy3-conjugated Goat anti-Rabbit IgG (H+L) (AS007) at 1:500 dilution. Blue: DAPI for nuclear staining. Perform high pressure antigen retrieval with 0.01 M citrate buffer (pH 6.0) prior to IF staining.



Immunofluorescence analysis of paraffin-embedded Rat lung tissue using Icam1 Rabbit pAb (A23661) at a dilution of 1:100 (40x lens). Secondary antibody: Cy3-conjugated Goat anti-Rabbit IgG (H+L) (AS007) at 1:500 dilution. Blue: DAPI for nuclear staining. Perform high pressure antigen retrieval with 0.01 M citrate buffer (pH 6.0) prior to IF staining.