

CD13 Rabbit pAb

Catalog No.: A23653

Basic Information

Observed MW

160kDa

Calculated MW

109kDa

Category

Primary antibody

Applications

ELISA, WB, IHC-P

Cross-Reactivity

Human, Mouse, Rat

Background

Predicted to enable metalloaminopeptidase activity; peptide binding activity; and zinc ion binding activity. Predicted to be involved in several processes, including negative regulation of renal sodium excretion; peptide catabolic process; and proteolysis. Predicted to act upstream of or within angiogenesis and cell differentiation. Located in external side of plasma membrane. Is expressed in several structures, including alimentary system; brain; metanephros; reproductive system; and sensory organ. Orthologous to human ANPEP (alanyl aminopeptidase, membrane).

Recommended Dilutions

WB 1:500 - 1:1000

IHC-P 1:500 - 1:1000

Immunogen Information

Gene ID

16790

Swiss Prot

P97449

Immunogen

Recombinant protein of mouse CD13.

Synonyms

Apn; AP-M; AP-N; Cd13; P150; CD13

Contact

☎ | 400-999-6126

✉ | cn.market@abclonal.com.cn

🌐 | www.abclonal.com.cn

Product Information

Source

Rabbit

Isotype

IgG

Purification

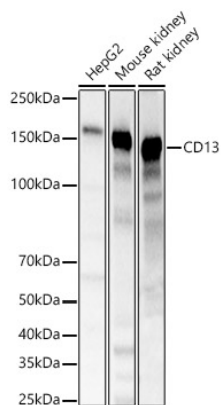
Affinity purification

Storage

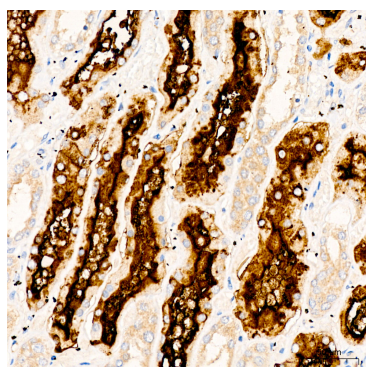
Store at -20°C. Avoid freeze / thaw cycles.

Buffer: PBS with 0.05% proclin300, 50% glycerol, pH7.3.

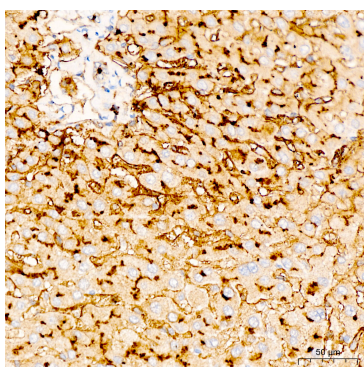
Validation Data



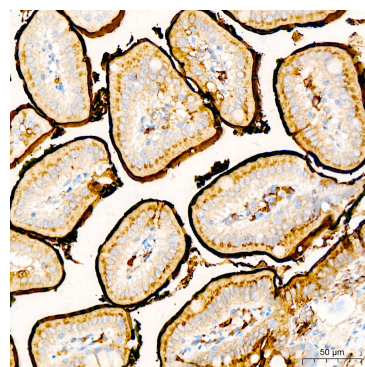
Western blot analysis of various lysates, using CD13 Rabbit pAb (A23653) at 1:1000 dilution.
 Secondary antibody: HRP Goat Anti-Rabbit IgG (H+L) (AS014) at 1:10000 dilution.
 Lysates/proteins: 25µg per lane.
 Blocking buffer: 3% nonfat dry milk in TBST.
 Detection: ECL Basic Kit (RM00020).
 Exposure time: 1s.



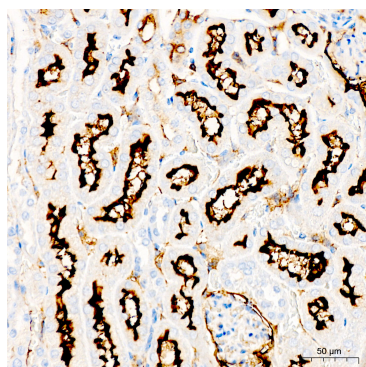
Immunohistochemistry analysis of CD13 in paraffin-embedded human kidney tissue using CD13 Rabbit pAb (A23653) at a dilution of 1:900 (40x lens). High pressure antigen retrieval was performed with 0.01 M citrate buffer (pH 6.0) prior to IHC staining.



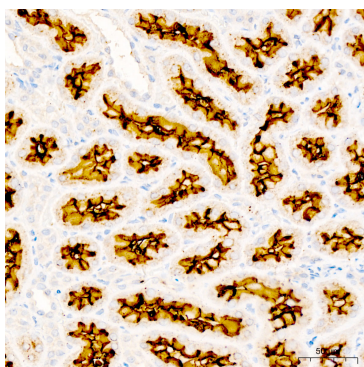
Immunohistochemistry analysis of CD13 in paraffin-embedded human liver tissue using CD13 Rabbit pAb (A23653) at a dilution of 1:900 (40x lens). High pressure antigen retrieval was performed with 0.01 M citrate buffer (pH 6.0) prior to IHC staining.



Immunohistochemistry analysis of CD13 in paraffin-embedded mouse Intestine tissue using CD13 Rabbit pAb (A23653) at a dilution of 1:900 (40x lens). High pressure antigen retrieval was performed with 0.01 M citrate buffer (pH 6.0) prior to IHC staining.



Immunohistochemistry analysis of CD13 in paraffin-embedded mouse kidney tissue using CD13 Rabbit pAb (A23653) at a dilution of 1:900 (40x lens). High pressure antigen retrieval was performed with 0.01 M citrate buffer (pH 6.0) prior to IHC staining.



Immunohistochemistry analysis of CD13 in paraffin-embedded rat kidney tissue using CD13 Rabbit pAb (A23653) at a dilution of 1:900 (40x lens). High pressure antigen retrieval was performed with 0.01 M citrate buffer (pH 6.0) prior to IHC staining.