

# Hmox1 Rabbit pAb

Catalog No.: A23650 **2 Publications**

## Basic Information

**Observed MW**

30kDa/35kDa

**Calculated MW**

33kDa

**Category**

Primary antibody

**Applications**

WB, IF-P, IHC-P, ELISA

**Cross-Reactivity**

Mouse, Rat

## Background

Predicted to enable several functions, including heme binding activity; heme oxygenase (decyclizing) activity; and protein homodimerization activity. Acts upstream of or within several processes, including cellular response to cisplatin; cellular response to metal ion; and regulation of macroautophagy. Located in nucleus. Is expressed in several structures, including alimentary system; central nervous system; early conceptus; genitourinary system; and sensory organ. Used to study hemochromatosis and malaria. Human ortholog(s) of this gene implicated in several diseases, including artery disease (multiple); cerebrovascular disease (multiple); factor VIII deficiency; lung disease (multiple); and sickle cell anemia. Orthologous to human HMOX1 (heme oxygenase 1).

## Recommended Dilutions

**WB** 1:500 - 1:1000**IF-P** 1:50 - 1:200**IHC-P** 1:50 - 1:200

**ELISA** Recommended starting concentration is 1 µg/mL. Please optimize the concentration based on your specific assay requirements.

## Immunogen Information

**Gene ID**

15368

**Swiss Prot**

P14901

**Immunogen**

Recombinant protein (or fragment). This information is considered to be commercially sensitive.

**Synonyms**

HO1; HO-1; Hmox; Hemox; Hsp32; D8Wsu38e; Hmox1

## Contact

 | 400-999-6126 | [cn.market@abclonal.com.cn](mailto:cn.market@abclonal.com.cn) | [www.abclonal.com.cn](http://www.abclonal.com.cn)

## Product Information

**Source**

Rabbit

**Isotype**

IgG

**Purification**

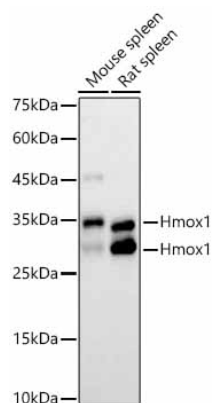
Affinity purification

**Storage**

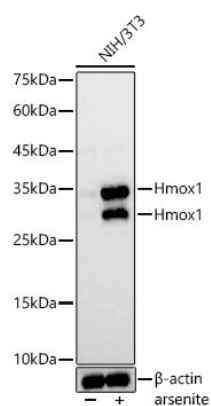
Store at -20°C. Avoid freeze / thaw cycles.

Buffer: PBS containing 50% glycerol, preserved with proclin300 or sodium azide (as specified on the Certificate of Analysis), pH 7.3.

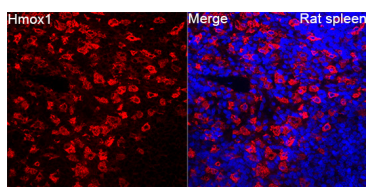
## Validation Data



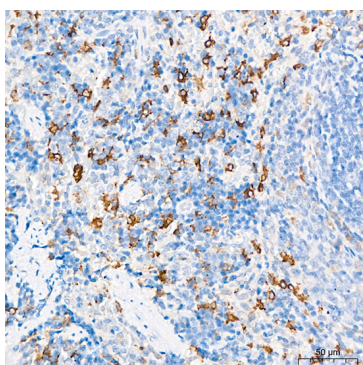
Western blot analysis of various lysates using Hmox1 Rabbit pAb (A23650) at 1:1000 dilution.  
Secondary antibody: HRP-conjugated Goat anti-Rabbit IgG (H+L) (AS014) at 1:10000 dilution.  
Lysates / proteins: 25 µg per lane.  
Blocking buffer: 3 % nonfat dry milk in TBST.  
Detection: ECL Basic Kit (RM00020).  
Exposure time: 30s.



Western blot analysis of lysates from NIH/3T3 cells using Hmox1 Rabbit pAb (A23650) at 1:1000 dilution.  
NIH/3T3 cells were treated with arsenite(50 µM) at 37°C for 8 hours.  
Secondary antibody: HRP-conjugated Goat anti-Rabbit IgG (H+L) (AS014) at 1:10000 dilution.  
Lysates/proteins: 25 µg per lane.  
Blocking buffer: 3% nonfat dry milk in TBST.  
Detection: ECL Basic Kit (RM00020).  
Exposure time: 1s.



Immunofluorescence analysis of Rat spleen tissue using Hmox1 Rabbit pAb (A23650) at a dilution of 1:100 (40x lens). Secondary antibody: Cy3-conjugated Goat anti-Rabbit IgG (H+L)(AS007) at 1:500 dilution. Blue: DAPI for nuclear staining. High pressure antigen retrieval performed with 0.01M Citrate Buffer(pH 6.0) prior to IF staining.



Immunohistochemistry analysis of paraffin-embedded Rat spleen tissue using Hmox1 Rabbit pAb (A23650) at a dilution of 1:200 (40x lens). High pressure antigen retrieval performed with 0.01M Citrate buffer (pH 6.0) prior to IHC staining.