

Arginase-1 Rabbit pAb

Catalog No.: A23648

1 Publications

Basic Information

Observed MW

40kDa

Calculated MW

34KDa

Category

Primary antibody

Applications

WB,IF-P,ELISA

Cross-Reactivity

Mouse, Rat

Background

Enables arginase activity. Involved in defense response to protozoan; negative regulation of T-helper 2 cell cytokine production; and negative regulation of activated T cell proliferation. Predicted to be located in several cellular components, including extracellular space; mitochondrial outer membrane; and neuronal cell body. Predicted to be active in cytosol. Is expressed in several structures, including alimentary system; central nervous system; genitourinary system; integumental system; and sensory organ. Used to study hyperargininemia. Human ortholog(s) of this gene implicated in asthma; hepatocellular carcinoma; and hyperargininemia. Orthologous to human ARG1 (arginase 1).

Recommended Dilutions

WB 1:1000 - 1:5000**IF-P** 1:50 - 1:200

ELISA Recommended starting concentration is 1 µg/mL. Please optimize the concentration based on your specific assay requirements.

Immunogen Information

Gene ID

11846

Swiss Prot

Q61176

Immunogen

Recombinant protein (or fragment). This information is considered to be commercially sensitive.

Synonyms

AI; PGIF; Arg-1; Arginase-1

Contact

 | 400-999-6126 | cn.market@abclonal.com.cn | www.abclonal.com.cn

Product Information

Source

Rabbit

Isotype

IgG

Purification

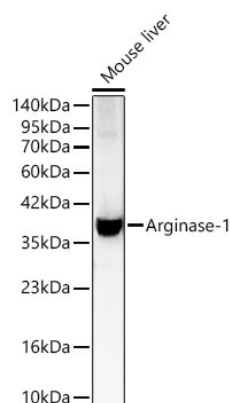
Affinity purification

Storage

Store at -20°C. Avoid freeze / thaw cycles.

Buffer: PBS containing 50% glycerol, preserved with proclin300 or sodium azide (as specified on the Certificate of Analysis), pH 7.3.

Validation Data



Western blot analysis of lysates from Mouse liver using Arginase-1 Rabbit pAb (A23648) at 1:5000 dilution.

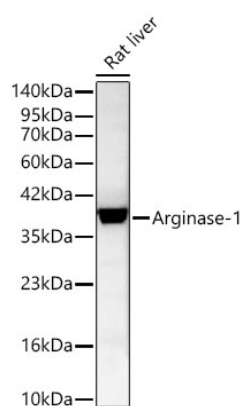
Secondary antibody: HRP-conjugated Goat anti-Rabbit IgG (H+L) (AS014) at 1:10000 dilution.

Lysates/proteins: 25 µg per lane.

Blocking buffer: 3% nonfat dry milk in TBST.

Detection: ECL Basic Kit (RM00020).

Exposure time: 1s.



Western blot analysis of lysates from Rat liver using Arginase-1 Rabbit pAb (A23648) at 1:5000 dilution.

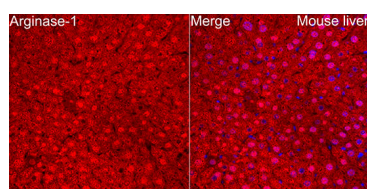
Secondary antibody: HRP-conjugated Goat anti-Rabbit IgG (H+L) (AS014) at 1:10000 dilution.

Lysates/proteins: 25 µg per lane.

Blocking buffer: 3% nonfat dry milk in TBST.

Detection: ECL Basic Kit (RM00020).

Exposure time: 20s.



Perform high pressure antigen retrieval with 10 mM citrate buffer pH 6.0 before commencing with IF staining protocol. Immunofluorescence analysis of paraffin-embedded mouse liver using Arginase-1 Rabbit pAb (A23648) at dilution of 1:200 (40x lens). Secondary antibody: Cy3-conjugated Goat anti-Rabbit IgG (H+L) (AS007) at 1:500 dilution. Blue: DAPI for nuclear staining.