

EXOC2 Rabbit mAb

Catalog No.: A23562 **Recombinant**

Basic Information

Observed MW

104 kDa

Calculated MW

104 kDa

Category

Primary antibody

Applications

WB, ELISA

Cross-Reactivity

Human, Mouse, Rat

CloneNo number

ARC3126

Background

The protein encoded by this gene is a component of the exocyst complex, a multi-protein complex essential for the polarized targeting of exocytic vesicles to specific docking sites on the plasma membrane. Though best characterized in yeast, the component proteins and the functions of the exocyst complex have been demonstrated to be highly conserved in higher eukaryotes. At least eight components of the exocyst complex, including this protein, are found to interact with the actin cytoskeletal remodeling and vesicle transport machinery. This interaction has been shown to mediate filopodia formation in fibroblasts. This protein has been shown to interact with the Ral subfamily of GTPases and thereby mediate exocytosis by tethering vesicles to the plasma membrane. Alternative splicing results in multiple transcript variants.

Recommended Dilutions

WB 1:1000 - 1:2000**ELISA** Recommended starting concentration is 1 µg/mL. Please optimize the concentration based on your specific assay requirements.

Immunogen Information

Gene ID

55770

Swiss Prot

Q96KP1

Immunogen

Recombinant protein (or fragment). This information is considered to be commercially sensitive.

Synonyms

SEC5; Sec5p; SEC5L1; NEDFACH; EXOC2

Contact

 | 400-999-6126 | cn.market@abclonal.com.cn | www.abclonal.com.cn

Product Information

Source

Rabbit

Isotype

IgG

Purification

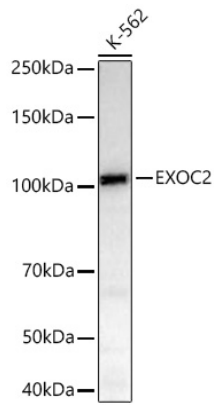
Affinity purification

Storage

Store at -20°C. Avoid freeze / thaw cycles.

Buffer: PBS containing 50% glycerol and 0.05% BSA, preserved with proclin300 or sodium azide (as specified on the Certificate of Analysis), pH 7.3.

Validation Data



Western blot analysis of lysates from K-562 cells using EXOC2 Rabbit mAb (A23562) at 1:2000 dilution incubated at room temperature for 1.5 hours.
Secondary antibody: HRP-conjugated Goat anti-Rabbit IgG (H+L) (AS014) at 1:10000 dilution.
Lysates/proteins: 25 µg per lane.
Blocking buffer: 3% nonfat dry milk in TBST.
Detection: ECL Basic Kit (RM00020).
Exposure time: 90 s.