

# METTL4 Rabbit mAb

Catalog No.: A23539 **Recombinant**

## Basic Information

### Observed MW

Refer to figures

### Calculated MW

54kDa

### Category

Primary antibody

### Applications

IHC-P, ELISA

### Cross-Reactivity

Human, Mouse, Rat

### CloneNo number

ARC59459

## Background

Enables RNA methyltransferase activity and site-specific DNA-methyltransferase (adenine-specific) activity. Involved in nucleic acid metabolic process; regulation of RNA metabolic process; and regulation of mitochondrial DNA replication. Located in cytosol; mitochondrial matrix; and nucleus.

## Recommended Dilutions

**IHC-P** 1:50 - 1:200

**ELISA** Recommended starting concentration is 1 µg/mL. Please optimize the concentration based on your specific assay requirements.

## Immunogen Information

### Gene ID

64863

### Swiss Prot

Q8N3J2

### Immunogen

Recombinant protein (or fragment). This information is considered to be commercially sensitive.

### Synonyms

HsT661; METTL4

## Contact

 | 400-999-6126

 | [cn.market@abclonal.com.cn](mailto:cn.market@abclonal.com.cn)

 | [www.abclonal.com.cn](http://www.abclonal.com.cn)

## Product Information

### Source

Rabbit

### Isotype

IgG

### Purification

Affinity purification

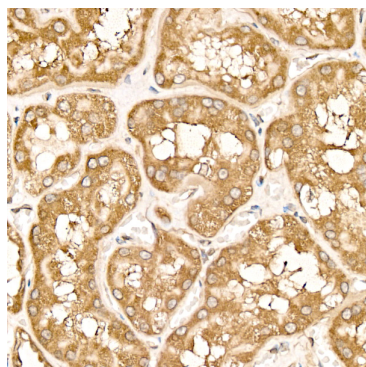
### Storage

Store at -20°C. Avoid freeze / thaw cycles.

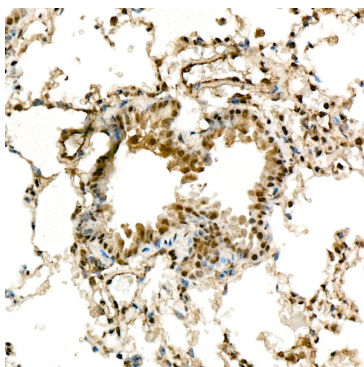
Buffer: PBS with 0.05% proclin300, 0.05% BSA, 50% glycerol, pH7.3.

## Validation Data

---



Immunohistochemistry analysis of paraffin-embedded Human kidney using METTL4 Rabbit mAb (A23539) at dilution of 1:100 (40x lens). High pressure antigen retrieval performed with 0.01M Citrate buffer (pH 6.0) prior to IHC staining.



Immunohistochemistry analysis of paraffin-embedded Mouse lung using METTL4 Rabbit mAb (A23539) at dilution of 1:100 (40x lens). High pressure antigen retrieval performed with 0.01M Citrate buffer (pH 6.0) prior to IHC staining.