

CD2 Rabbit mAb

Catalog No.: A23527 **Recombinant**

Basic Information

Observed MW

45-65kDa

Calculated MW

38kDa

Category

Primary antibody

Applications

WB,FC,ELISA

Cross-Reactivity

Mouse

CloneNo number

ARC60614

Background

Enables identical protein binding activity. Predicted to be involved in T cell activation; heterotypic cell-cell adhesion; and positive regulation of cytokine production. Located in several cellular components, including cell-cell junction; cytoplasmic side of plasma membrane; and external side of plasma membrane. Is anchored component of plasma membrane. Is expressed in several structures, including alimentary system; central nervous system; genitourinary system; hemolymphoid system gland; and liver and biliary system. Orthologous to human CD2 (CD2 molecule).

Recommended Dilutions

WB 1:1000 - 1:6000

FC 1:500 - 1:1000

ELISA Recommended starting concentration is 1 µg/mL. Please optimize the concentration based on your specific assay requirements.

Immunogen Information

Gene ID

12481

Swiss Prot

P08920

Immunogen

Recombinant protein (or fragment). This information is considered to be commercially sensitive.

Synonyms

Ly37; LFA-2; Ly-37; CD2

Contact

☎ | 400-999-6126

✉ | cn.market@abclonal.com.cn

🌐 | www.abclonal.com.cn

Product Information

Source

Rabbit

Isotype

IgG

Purification

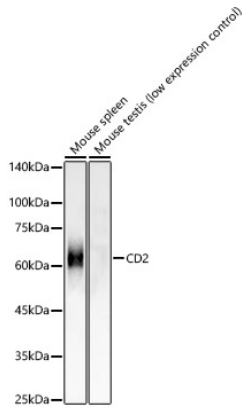
Affinity purification

Storage

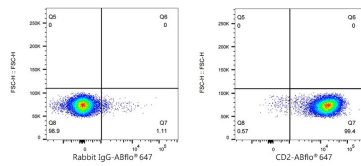
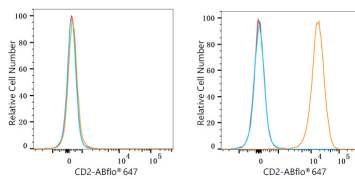
Store at -20°C. Avoid freeze / thaw cycles.

Buffer: PBS containing 50% glycerol and 0.05% BSA, preserved with proclin300 or sodium azide (as specified on the Certificate of Analysis), pH 7.3.

Validation Data



Western blot analysis of various lysates, using CD2 Rabbit mAb (A23527) at 1:1000 dilution.
 Secondary antibody: HRP-conjugated Goat anti-Rabbit IgG (H+L) (AS014) at 1:10000 dilution.
 Lysates/proteins: 25µg per lane.
 Blocking buffer: 3% nonfat dry milk in TBST.
 Detection: ECL Basic Kit (RM00020).
 Exposure time: 5s.



Flow cytometry: 1×10^6 4T1 cells (negative control, left) and C57BL/6 mouse Splenocytes (right) were surface-stained with CD2 Rabbit mAb (A23527, 2 µg/mL, orange line) or ABflo® 647 Rabbit IgG isotype control (A22070, 5 µl/Test, blue line), followed by Alexa Fluor® 647 conjugated goat anti-rabbit pAb staining. Non-fluorescently stained cells were used as blank control (red line).

Flow cytometry: 1×10^6 C57BL/6 mouse Splenocytes were surface-stained with ABflo® 647 Rabbit IgG isotype control (A22070, 5 µl/Test, left) or CD2 Rabbit mAb (A23527, 2 µg/mL, right).