

CD3E Rabbit mAb

Catalog No.: A23504 **Recombinant**

Basic Information

Observed MW

Refer to figures

Calculated MW

23kDa

Category

Primary antibody

Applications

WB,IHC-P,FC,ELISA

Cross-Reactivity

Human

CloneNo number

ARC0327

Background

The protein encoded by this gene is the CD3-epsilon polypeptide, which together with CD3-gamma, -delta and -zeta, and the T-cell receptor alpha/beta and gamma/delta heterodimers, forms the T-cell receptor-CD3 complex. This complex plays an important role in coupling antigen recognition to several intracellular signal-transduction pathways. The genes encoding the epsilon, gamma and delta polypeptides are located in the same cluster on chromosome 11. The epsilon polypeptide plays an essential role in T-cell development. Defects in this gene cause immunodeficiency. This gene has also been linked to a susceptibility to type I diabetes in women.

Recommended Dilutions

WB 1:500 - 1:1000**IHC-P** 1:50 - 1:200**FC** 1:50 - 1:200

ELISA Recommended starting concentration is 1 µg/mL. Please optimize the concentration based on your specific assay requirements.

Immunogen Information

Gene ID

916

Swiss Prot

P07766

Immunogen

Synthetic peptide. This information is considered to be commercially sensitive.

Synonyms

T3E; TCRE; IMD18; CD3epsilon; CD3E

Contact

 | 400-999-6126 | cn.market@abclonal.com.cn | www.abclonal.com.cn

Product Information

Source

Rabbit

Isotype

IgG

Purification

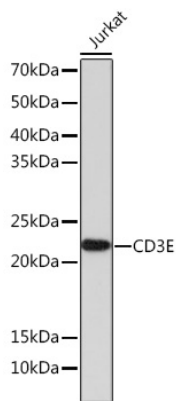
Affinity purification

Storage

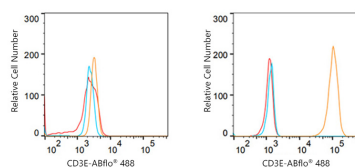
Store at -20°C. Avoid freeze / thaw cycles.

Buffer: PBS with 0.09% Sodium azide, 0.05% BSA, 50% glycerol, pH7.3.

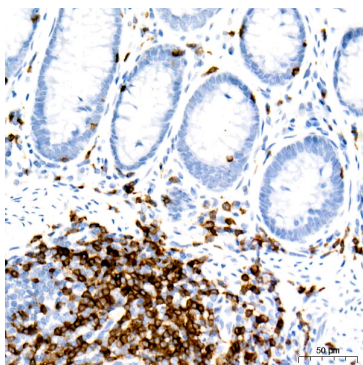
Validation Data



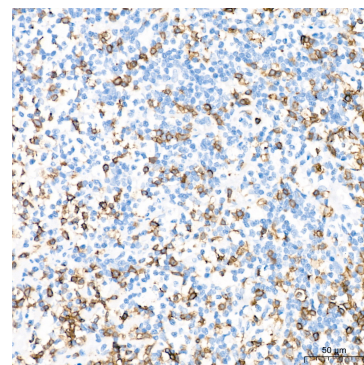
Western blot analysis of lysates from Jurkat cells, using CD3E Rabbit mAb (A23504) at 1:1000 dilution.
 Secondary antibody: HRP-conjugated Goat anti-Rabbit IgG (H+L) (AS014) at 1:10000 dilution.
 Lysates/proteins: 25µg per lane.
 Blocking buffer: 3% nonfat dry milk in TBST.
 Detection: ECL Enhanced Kit (RM00021).
 Exposure time: 3min.



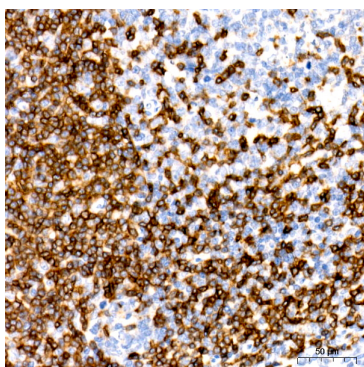
Flow cytometry: 1×10^6 Raji cells (negative control, left) and Jurkat cells (right) were surface-stained with CD3E Rabbit mAb (A23504, 2 µg/mL, orange line) or ABflo® 488 Rabbit IgG isotype control (A22069, 2 µg/mL, blue line), followed by Alexa Fluor® 488 conjugated goat anti-rabbit pAb (1:200 dilution) staining. Non-fluorescently stained cells were used as blank control (red line).



Immunohistochemistry analysis of paraffin-embedded Human colon using CD3E Rabbit mAb (A23504) at dilution of 1:100 (40x lens). High pressure antigen retrieval performed with 0.01M Citrate buffer (pH 6.0) prior to IHC staining.



Immunohistochemistry analysis of paraffin-embedded Human Follicular lymphoma using CD3E Rabbit mAb (A23504) at dilution of 1:100 (40x lens). High pressure antigen retrieval performed with 0.01M Citrate buffer (pH 6.0) prior to IHC staining.



Immunohistochemistry analysis of paraffin-embedded Human tonsil using CD3E Rabbit mAb (A23504) at dilution of 1:100 (40x lens). High pressure antigen retrieval performed with 0.01M Citrate buffer (pH 6.0) prior to IHC staining.