

# [KO Validated] Smad3 Rabbit mAb

Catalog No.: A23491 **KO** **Validated** **Recombinant**

## Basic Information

### Observed MW

52kDa

### Calculated MW

48kDa

### Category

Primary antibody

### Applications

WB, IP, IHC-P, ELISA

### Cross-Reactivity

Human

### CloneNo number

ARC0490

## Background

The SMAD family of proteins are a group of intracellular signal transducer proteins similar to the gene products of the Drosophila gene 'mothers against decapentaplegic' (Mad) and the C. elegans gene Sma. The SMAD3 protein functions in the transforming growth factor-beta signaling pathway, and transmits signals from the cell surface to the nucleus, regulating gene activity and cell proliferation. This protein forms a complex with other SMAD proteins and binds DNA, functioning both as a transcription factor and tumor suppressor. Mutations in this gene are associated with aneurysms-osteoarthritis syndrome and Loeys-Dietz Syndrome 3.

## Recommended Dilutions

**WB** 1:1000 - 1:4000**IP** 0.5µg-4µg antibody for  
200µg-400µg extracts of  
whole cells**IHC-P** 1:50 - 1:200**ELISA** Recommended starting  
concentration is 1 µg/mL.  
Please optimize the  
concentration based on  
your specific assay  
requirements.

## Immunogen Information

### Gene ID

4088

### Swiss Prot

P84022

### Immunogen

Recombinant protein (or fragment). This information is considered to be commercially sensitive.

### Synonyms

LDS3; mad3; LDS1C; MADH3; JV15-2; hMAD-3; hSMAD3; HSPC193; HsT17436; d3

## Contact

 | 400-999-6126 | [cn.market@abclonal.com.cn](mailto:cn.market@abclonal.com.cn) | [www.abclonal.com.cn](http://www.abclonal.com.cn)

## Product Information

### Source

Rabbit

### Isotype

IgG

### Purification

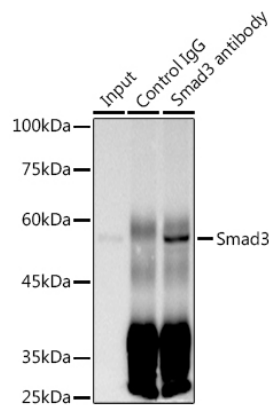
Affinity purification

### Storage

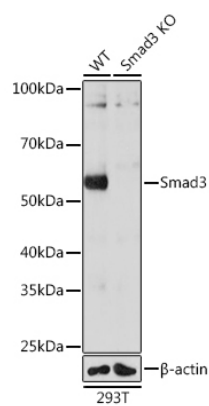
Store at -20°C. Avoid freeze / thaw cycles.

Buffer: PBS with 0.09% Sodium azide, 0.05% BSA, 50% glycerol, pH7.3.

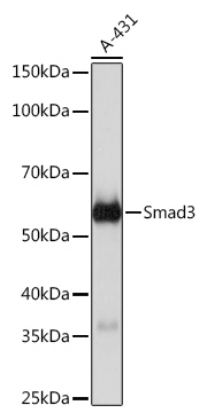
Validation Data



Immunoprecipitation analysis of 300 µg extracts of A-431 cells using 3 µg Smad3 antibody (A23491). Western blot was performed from the immunoprecipitate using Smad3 antibody (A23491) at a dilution of 1:500.



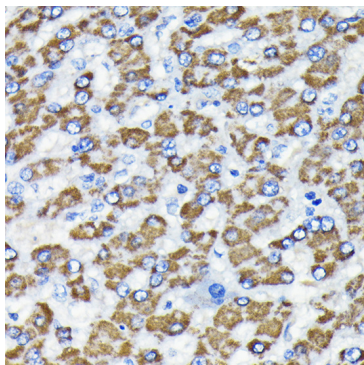
Western blot analysis of lysates from wild type (WT) and Smad3 knockout (KO) 293T cells, using [KO Validated] Smad3 Rabbit mAb (A23491) at 1:1000 dilution. Secondary antibody: HRP-conjugated Goat anti-Rabbit IgG (H+L) (AS014) at 1:10000 dilution. Lysates/proteins: 25µg per lane. Blocking buffer: 3% nonfat dry milk in TBST. Detection: ECL Basic Kit (RM00020). Exposure time: 10s.



Western blot analysis of lysates from A-431 cells, using [KO Validated] Smad3 Rabbit mAb (A23491) at 1:1000 dilution. Secondary antibody: HRP-conjugated Goat anti-Rabbit IgG (H+L) (AS014) at 1:10000 dilution. Lysates/proteins: 25µg per lane. Blocking buffer: 3% nonfat dry milk in TBST. Detection: ECL Basic Kit (RM00020). Exposure time: 10s.

## Validation Data

---



Immunohistochemistry analysis of paraffin-embedded Human liver using [KO Validated] Smad3 Rabbit mAb (A23491) at dilution of 1:100 (40x lens). Microwave antigen retrieval performed with 0.01M PBS Buffer (pH 7.2) prior to IHC staining.