

Tau Rabbit mAb

Catalog No.: A23490

Recombinant

6 Publications

Basic Information

Observed MW

50-80kDa

Calculated MW

79kDa

Category

Primary antibody

Applications

WB,IP,IF-F,IF-P,IHC-P,ELISA

Cross-Reactivity

Human, Mouse, Rat

CloneNo number

ARC58125

Background

This gene encodes the microtubule-associated protein tau (MAPT) whose transcript undergoes complex, regulated alternative splicing, giving rise to several mRNA species. MAPT transcripts are differentially expressed in the nervous system, depending on stage of neuronal maturation and neuron type. MAPT gene mutations have been associated with several neurodegenerative disorders such as Alzheimer's disease, Pick's disease, frontotemporal dementia, cortico-basal degeneration and progressive supranuclear palsy.

Recommended Dilutions

WB 1:1000 - 1:5000**IP** 0.5µg-4µg antibody for
200µg-400µg extracts of
whole cells**IF-F** 1:200 - 1:1600**IF-P** 1:200 - 1:1600**IHC-P** 1:500 - 1:2000**ELISA** Recommended starting
concentration is 1 µg/mL.
Please optimize the
concentration based on
your specific assay
requirements.

Immunogen Information

Gene ID

4137

Swiss Prot

P10636

Immunogen

Synthetic peptide. This information is considered to be commercially sensitive.

SynonymsTAU; MSTD; PPND; DDPAC; MAPTL; MTBT1; MTBT2; tau-40; FTDP-17; PPP1R103; Tau-PHF6;
Tau

Product Information

Source

Rabbit

Isotype

IgG

Purification

Affinity purification

Storage

Store at -20°C. Avoid freeze / thaw cycles.

Buffer: PBS containing 50% glycerol and 0.05% BSA, preserved with proclin300 or sodium azide (as specified on the Certificate of Analysis), pH 7.3.

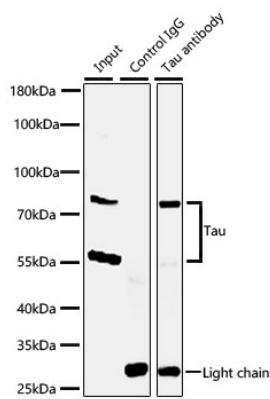
Contact

☎ | 400-999-6126

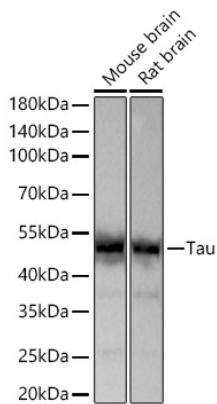
✉ | cn.market@abclonal.com.cn

🌐 | www.abclonal.com.cn

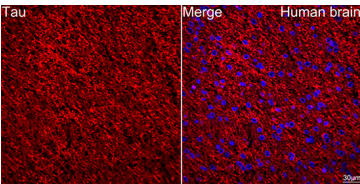
Validation Data



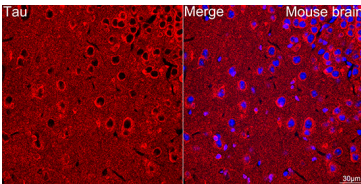
Immunoprecipitation of Tau from 300 µg extracts of SH-SY5Y cells was performed using 2 µg of Tau Rabbit mAb (A23490). Rabbit IgG isotype control (AC005) was used to precipitate the Control IgG sample. IP samples were eluted with 1X reducing Laemmli Buffer. The Input lane represents 10% of the total input. Western blot analysis of immunoprecipitates was conducted using Tau Rabbit mAb (A23490) at a dilution of 1:3000.



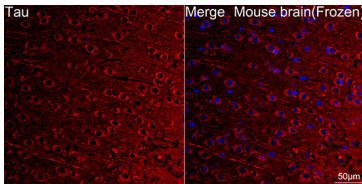
Western blot analysis of various lysates using Tau Rabbit mAb (A23490) at 1:5000 dilution incubated overnight at 4°C. Secondary antibody: HRP-conjugated Goat anti-Rabbit IgG (H+L) (AS014) at 1:10000 dilution. Lysates/proteins: 25 µg per lane. Blocking buffer: 3% nonfat dry milk in TBST. Detection: ECL Basic Kit (RM00020). Exposure time: 30s.



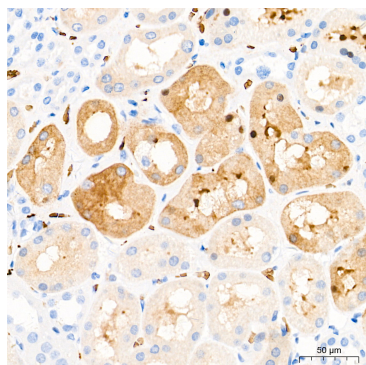
Confocal imaging of paraffin-embedded Human brain tissue using Tau Rabbit mAb (A23490, dilution 1:400) followed by a further incubation with Cy3 Goat Anti-Rabbit IgG (H+L) (AS007, dilution 1:500) (Red). DAPI was used for nuclear staining (Blue). High pressure antigen retrieval performed with 0.01M Citrate Buffer (pH 6.0) prior to IF staining. Objective: 40x.



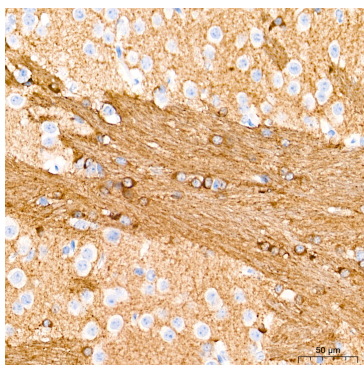
Confocal imaging of paraffin-embedded Mouse brain tissue using Tau Rabbit mAb (A23490, dilution 1:400) followed by a further incubation with Cy3 Goat Anti-Rabbit IgG (H+L) (AS007, dilution 1:500) (Red). DAPI was used for nuclear staining (Blue). High pressure antigen retrieval performed with 0.01M Citrate Buffer (pH 6.0) prior to IF staining. Objective: 40x.



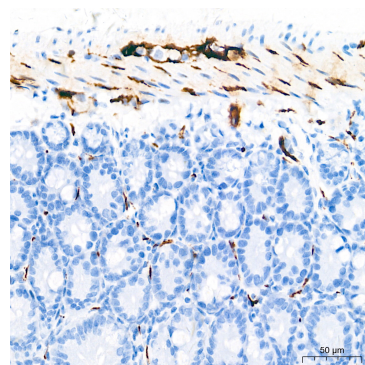
Confocal imaging of frozen sections Mouse brain tissue using Tau Rabbit mAb (A23490, dilution 1:200) followed by a further incubation with Cy3 Goat Anti-Rabbit IgG (H+L) (AS007, dilution 1:500) (Red). DAPI was used for nuclear staining (Blue). Microwave antigen retrieval performed with 0.01M Citrate Buffer (pH 6.0) prior to IF staining. Objective: 40x.



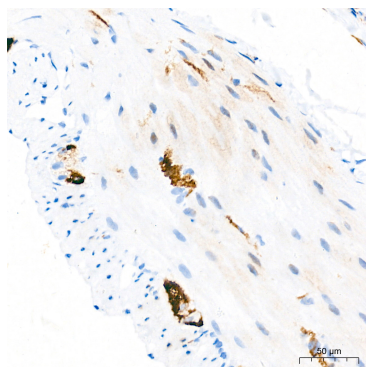
Immunohistochemistry analysis of paraffin-embedded Human kidney tissue using Tau Rabbit mAb (A23490) at a dilution of 1:2000 (40x lens). High pressure antigen retrieval performed with 0.01M Tris-EDTA Buffer (pH 9.0) prior to IHC staining.



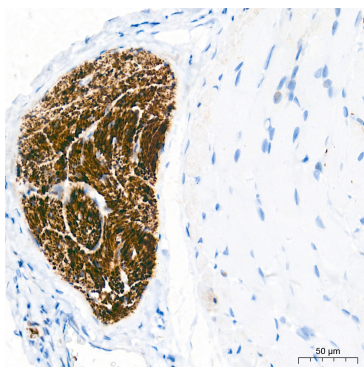
Immunohistochemistry analysis of paraffin-embedded Mouse brain tissue using Tau Rabbit mAb (A23490) at a dilution of 1:2000 (40x lens). High pressure antigen retrieval performed with 0.01M Tris-EDTA Buffer (pH 9.0) prior to IHC staining.



Immunohistochemistry analysis of paraffin-embedded Mouse intestine tissue using Tau Rabbit mAb (A23490) at a dilution of 1:2000 (40x lens). High pressure antigen retrieval performed with 0.01M Tris-EDTA Buffer (pH 9.0) prior to IHC staining.



Immunohistochemistry analysis of paraffin-embedded Rat colon tissue using Tau Rabbit mAb (A23490) at a dilution of 1:2000 (40x lens). High pressure antigen retrieval performed with 0.01M Tris-EDTA Buffer (pH 9.0) prior to IHC staining.



Immunohistochemistry analysis of paraffin-embedded Rat esophagus tissue using Tau Rabbit mAb (A23490) at a dilution of 1:2000 (40x lens). High pressure antigen retrieval performed with 0.01M Tris-EDTA Buffer (pH 9.0) prior to IHC staining.