

IL1 β Rabbit mAb

Catalog No.: A23484

Recombinant

12 Publications

Basic Information

Observed MW

28 kDa/31 kDa

Calculated MW

31 kDa

Category

Primary antibody

Applications

WB, IF-P, ELISA

Cross-Reactivity

Human

CloneNo number

ARC0114

Background

The protein encoded by this gene is a member of the interleukin 1 cytokine family. This cytokine is produced by activated macrophages as a proprotein, which is proteolytically processed to its active form by caspase 1 (CASP1/ICE). This cytokine is an important mediator of the inflammatory response, and is involved in a variety of cellular activities, including cell proliferation, differentiation, and apoptosis. The induction of cyclooxygenase-2 (PTGS2/COX2) by this cytokine in the central nervous system (CNS) is found to contribute to inflammatory pain hypersensitivity. Similarly, IL-1B has been implicated in human osteoarthritis pathogenesis. Patients with severe Coronavirus Disease 2019 (COVID-19) present elevated levels of pro-inflammatory cytokines such as IL-1B in bronchial alveolar lavage fluid samples. The lung damage induced by the Severe acute respiratory syndrome coronavirus 2 (SARS-CoV-2) is to a large extent, a result of the inflammatory response promoted by cytokines such as IL-1B. This gene and eight other interleukin 1 family genes form a cytokine gene cluster on chromosome 2.

Recommended Dilutions

WB 1:1000 - 1:4000**IF-P** 1:100 - 1:400

ELISA Recommended starting concentration is 1 μ g/mL. Please optimize the concentration based on your specific assay requirements.

Immunogen Information

Gene ID

3553

Swiss Prot

P01584

Immunogen

Recombinant protein (or fragment). This information is considered to be commercially sensitive.

SynonymsIL-1; IL1F2; IL1beta; IL1-BETA; IL1 β

Contact

 | 400-999-6126 | cn.market@abclonal.com.cn | www.abclonal.com.cn

Product Information

Source

Rabbit

Isotype

IgG

Purification

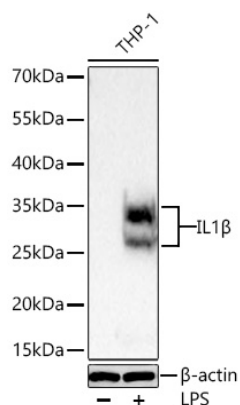
Affinity purification

Storage

Store at -20°C. Avoid freeze / thaw cycles.

Buffer: PBS with 0.09% Sodium azide, 0.05% BSA, 50% glycerol, pH7.3.

Validation Data



Western blot analysis of lysates from THP-1 cells using IL1 β Rabbit mAb (A23484) at 1:1000 dilution incubated overnight at 4°C. THP-1 cells were treated with LPS (0.5 μ g/mL) for 2 hours after serum starvation overnight.
Secondary antibody: HRP-conjugated Goat anti-Rabbit IgG (H+L) (AS014) at 1:10000 dilution.
Lysates/proteins: 30 μ g per lane.
Blocking buffer: 3% nonfat dry milk in TBST.
Detection: ECL Basic Kit (RM00020).
Exposure time: 5 s.