

MCM2 Rabbit mAb

Catalog No.: A23477 **Recombinant** **1 Publications**

Basic Information

Observed MW

125 kDa

Calculated MW

102 kDa

Category

Primary antibody

Applications

WB,IHC-P,IF/ICC,ChIP,ELISA

Cross-Reactivity

Human, Mouse, Rat

CloneNo number

ARC55704

Recommended Dilutions

WB	1:2000 - 1:20000
IHC-P	1:100 - 1:500
IF/ICC	1:50 - 1:200
ChIP	2 µg antibody for 10 µg - 15 µg of Chromatin
ELISA	Recommended starting concentration is 1 µg/mL. Please optimize the concentration based on your specific assay requirements.

Contact

☎ | 400-999-6126

✉ | cn.market@abclonal.com.cn

🌐 | www.abclonal.com.cn

Background

The protein encoded by this gene is one of the highly conserved mini-chromosome maintenance proteins (MCM) that are involved in the initiation of eukaryotic genome replication. The hexameric protein complex formed by MCM proteins is a key component of the pre-replication complex (pre_RC) and may be involved in the formation of replication forks and in the recruitment of other DNA replication related proteins. This protein forms a complex with MCM4, 6, and 7, and has been shown to regulate the helicase activity of the complex. This protein is phosphorylated, and thus regulated by, protein kinases CDC2 and CDC7. Multiple alternatively spliced transcript variants have been found, but the full-length nature of some variants has not been defined.

Immunogen Information

Gene ID	Swiss Prot
4171	P49736

Immunogen

Recombinant protein (or fragment). This information is considered to be commercially sensitive.

Synonyms

BM28; CCNL1; CDCL1; cdc19; DFNA70; D3S3194; MITOTIN; MCM2

Product Information

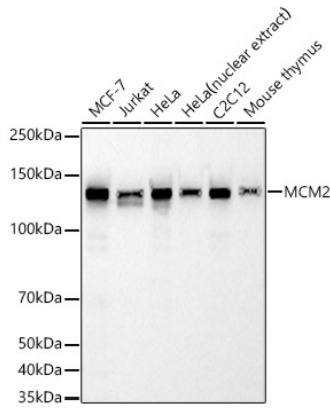
Source	Isotype	Purification
Rabbit	IgG	Affinity purification

Storage

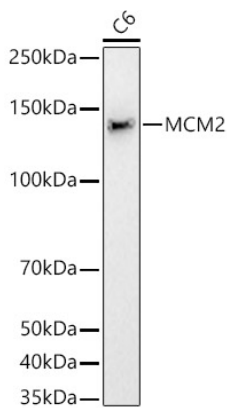
Store at -20°C. Avoid freeze / thaw cycles.

Buffer: PBS containing 50% glycerol and 0.05% BSA, preserved with proclin300 or sodium azide (as specified on the Certificate of Analysis), pH 7.3.

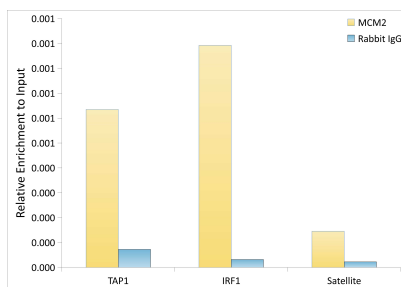
Validation Data



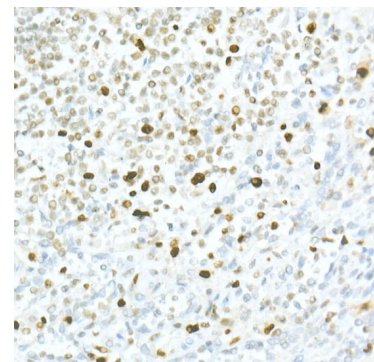
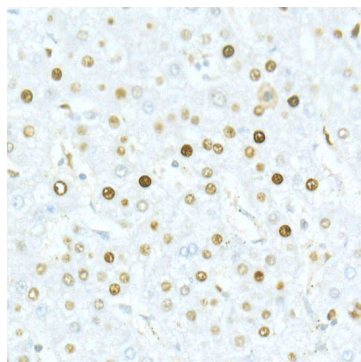
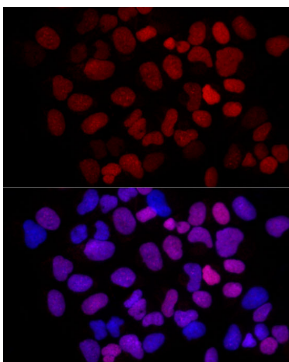
Western blot analysis of various lysates, using MCM2 Rabbit mAb (A23477) at 1:20000 dilution. Secondary antibody: HRP-conjugated Goat anti-Rabbit IgG (H+L) (AS014) at 1:10000 dilution. Lysates/proteins: 25µg per lane. Blocking buffer: 3% nonfat dry milk in TBST. Detection: ECL Basic Kit (RM00020). Exposure time: 30s.



Western blot analysis of lysates from C6 cells, using MCM2 Rabbit mAb (A23477) at 1:20000 dilution. Secondary antibody: HRP-conjugated Goat anti-Rabbit IgG (H+L) (AS014) at 1:10000 dilution. Lysates/proteins: 25µg per lane. Blocking buffer: 3% nonfat dry milk in TBST. Detection: ECL Basic Kit (RM00020). Exposure time: 30s.

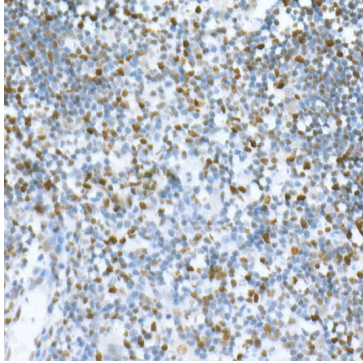


Chromatin immunoprecipitation was performed with 15 µg of cross-linked chromatin from HeLa, using 2 µg of MCM2 Rabbit mAb(A23477) and Rabbit IgG isotype control (AC042). The enrichment of immunoprecipitated DNA at different genomic loci was examined by quantitative PCR. The histogram compares the ratio of the immunoprecipitated DNA to the input at given loci.

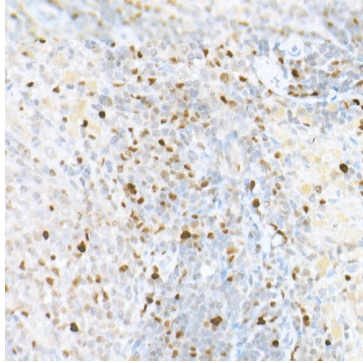


Validation Data

Immunofluorescence analysis of U-2OS cells using MCM2 Rabbit mAb (A23477) at dilution of 1:100 (40x lens). Secondary antibody: Cy3-conjugated Goat anti-Rabbit IgG (H+L) (AS007) at 1:500 dilution. Blue: DAPI for nuclear staining.



Immunohistochemistry analysis of paraffin-embedded Human liver using MCM2 Rabbit mAb (A23477) at dilution of 1:300 (40x lens). High pressure antigen retrieval performed with 0.01M Citrate buffer (pH 6.0) prior to IHC staining.



Immunohistochemistry analysis of paraffin-embedded Human spleen using MCM2 Rabbit mAb (A23477) at dilution of 1:300 (40x lens). High pressure antigen retrieval performed with 0.01M Citrate buffer (pH 6.0) prior to IHC staining.

Immunohistochemistry analysis of paraffin-embedded Mouse spleen using MCM2 Rabbit mAb (A23477) at dilution of 1:300 (40x lens). High pressure antigen retrieval performed with 0.01M Citrate buffer (pH 6.0) prior to IHC staining.

Immunohistochemistry analysis of paraffin-embedded Rat spleen using MCM2 Rabbit mAb (A23477) at dilution of 1:300 (40x lens). High pressure antigen retrieval performed with 0.01M Citrate buffer (pH 6.0) prior to IHC staining.