

Sarm1 Mouse mAb

Catalog No.: A23440 **1 Publications**

Basic Information

Observed MW

73kDa

Calculated MW

79kDa

Category

Primary antibody

Applications

WB,ELISA

Cross-Reactivity

Human, Mouse, Rat

CloneNo number

AMC0559

Background

Enables NAD⁺ nucleosidase activity. Involved in NAD catabolic process; positive regulation of neuron death; and regulation of dendrite morphogenesis. Acts upstream of or within regulation of apoptotic process and response to glucose. Located in several cellular components, including dendrite; microtubule; and mitochondrion. Is extrinsic component of mitochondrial outer membrane. Is expressed in immune system; nervous system; neural retina; and tongue. Orthologous to human SARM1 (sterile alpha and TIR motif containing 1).

Recommended Dilutions

WB 1:2000 - 1:8000

ELISA Recommended starting concentration is 1 µg/mL. Please optimize the concentration based on your specific assay requirements.

Immunogen Information

Gene ID

237868

Swiss Prot

Q6PDS3

Immunogen

Synthetic peptide. This information is considered to be commercially sensitive.

Synonyms

Sarm; MyD885; A830091I15Rik; Sarm1

Contact

☎ | 400-999-6126

✉ | cn.market@abclonal.com.cn

🌐 | www.abclonal.com.cn

Product Information

Source

Mouse

Isotype

IgG1

Purification

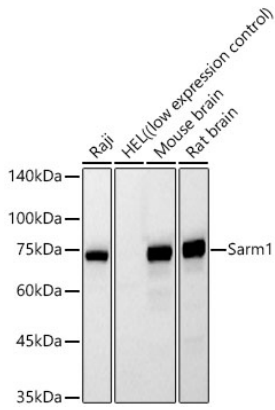
Affinity purification

Storage

Store at -20°C. Avoid freeze / thaw cycles.

Buffer: PBS containing 50% glycerol, preserved with proclin300 or sodium azide (as specified on the Certificate of Analysis), pH 7.3.

Validation Data



Western blot analysis of various lysates using Sarm1 Mouse mAb (A23440) at 1:8000 dilution.
Secondary antibody: HRP-conjugated Goat anti-Mouse IgG (H+L) (AS003) at 1:10000 dilution.
Lysates/proteins: 25 μ g per lane.
Blocking buffer: 3% nonfat dry milk in TBST.
Detection: ECL Basic Kit (RM00020).
Exposure time: 60s.