

# Caspase-1 p20 Rabbit mAb

Catalog No.: A23429

Recombinant

3 Publications

## Basic Information

### Observed MW

20-25kDa

### Calculated MW

10KDa/29KDa/35KDa/42KDa/45KDa

### Category

Primary antibody

### Applications

ELISA, WB

### Cross-Reactivity

Human

### CloneNo number

ARC60705

## Background

This gene encodes a protein which is a member of the cysteine-aspartic acid protease (caspase) family. Sequential activation of caspases plays a central role in the execution-phase of cell apoptosis. Caspases exist as inactive proenzymes which undergo proteolytic processing at conserved aspartic residues to produce 2 subunits, large and small, that dimerize to form the active enzyme. This gene was identified by its ability to proteolytically cleave and activate the inactive precursor of interleukin-1, a cytokine involved in the processes such as inflammation, septic shock, and wound healing. This gene has been shown to induce cell apoptosis and may function in various developmental stages. Studies of a similar gene in mouse suggest a role in the pathogenesis of Huntington disease. Alternative splicing results in transcript variants encoding distinct isoforms.

## Recommended Dilutions

WB 1:1000 - 1:5000

## Immunogen Information

### Gene ID

834

### Swiss Prot

P29466

### Immunogen

A synthetic peptide corresponding to a sequence within amino acids 200-300 of human Caspase-1 p20(NP\_001244047.1).

### Synonyms

ICE; P45; IL1BC; Caspase-1 p20

## Contact

☎ | 400-999-6126

✉ | [cn.market@abclonal.com.cn](mailto:cn.market@abclonal.com.cn)🌐 | [www.abclonal.com.cn](http://www.abclonal.com.cn)

## Product Information

### Source

Rabbit

### Isotype

IgG

### Purification

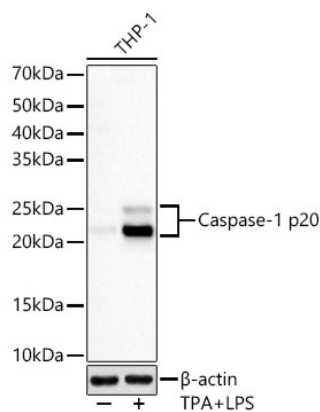
Affinity purification

### Storage

Store at -20°C. Avoid freeze / thaw cycles.

Buffer: PBS with 0.05% proclin300, 0.05% BSA, 50% glycerol, pH7.3.

# Validation Data



Western blot analysis of THP-1, using Caspase-1 p20 Rabbit mAb (A23429) at 1:2000 dilution. THP-1 cells were treated by PMA/TPA (80 nM) at 37°C for overnight and LPS (1 µg/ml) at 37°C for 6 hours. Secondary antibody: HRP Goat Anti-Rabbit IgG (H+L) (AS014) at 1:10000 dilution. Lysates/proteins: 25µg per lane. Blocking buffer: 3% nonfat dry milk in TBST. Detection: ECL Basic Kit (RM00020). Exposure time: 30s.