

# SMPD3/NSMase2 Rabbit mAb

Catalog No.: A23417 **Recombinant**

## Basic Information

**Observed MW**

71kDa

**Calculated MW**

71kDa

**Category**

Primary antibody

**Applications**

WB, IHC-P, ELISA

**Cross-Reactivity**

Human, Mouse, Rat

**CloneNo number**

ARC60887

## Background

Predicted to enable phosphatidic acid binding activity; phosphatidylserine binding activity; and sphingomyelin phosphodiesterase activity. Predicted to be involved in positive regulation of exosomal secretion and sphingomyelin metabolic process. Predicted to act upstream of or within several processes, including animal organ development; enzyme linked receptor protein signaling pathway; and sphingolipid metabolic process. Predicted to be located in Golgi apparatus and plasma membrane. Predicted to be active in cytoplasm. Biomarker of pulmonary emphysema.

## Recommended Dilutions

**WB** 1:2000 - 1:12000**IHC-P** 1:200 - 1:2000

**ELISA** Recommended starting concentration is 1 µg/mL. Please optimize the concentration based on your specific assay requirements.

## Immunogen Information

**Gene ID**

55512

**Swiss Prot**

Q9NY59

**Immunogen**

Recombinant protein (or fragment). This information is considered to be commercially sensitive.

**Synonyms**

NSMASE2; SMPD3/NSMase2

## Contact

 | 400-999-6126 | [cn.market@abclonal.com.cn](mailto:cn.market@abclonal.com.cn) | [www.abclonal.com.cn](http://www.abclonal.com.cn)

## Product Information

**Source**

Rabbit

**Isotype**

IgG

**Purification**

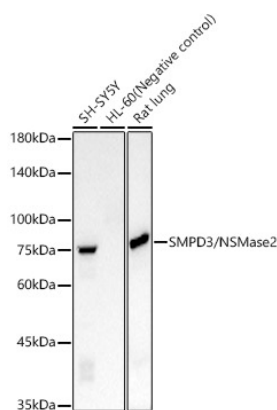
Affinity purification

**Storage**

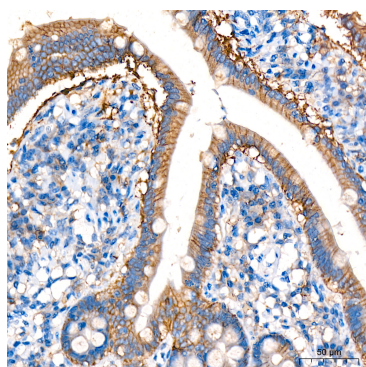
Store at -20°C. Avoid freeze / thaw cycles.

Buffer: PBS containing 50% glycerol and 0.05% BSA, preserved with proclin300 or sodium azide (as specified on the Certificate of Analysis), pH 7.3.

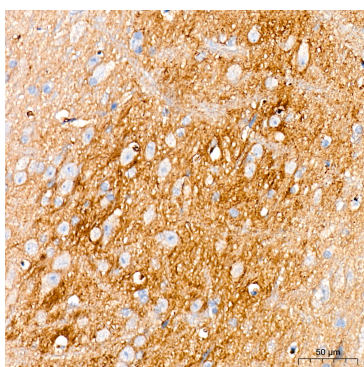
## Validation Data



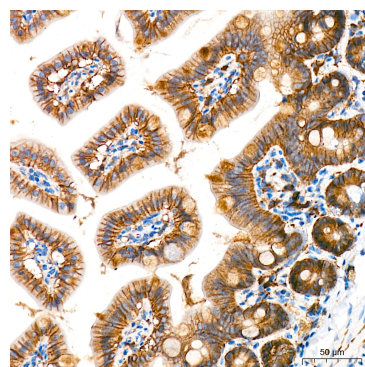
Western blot analysis of various lysates, using SMPD3/NSMase2 Rabbit mAb (A23417) at 1:2000 dilution. Secondary antibody: HRP-conjugated Goat anti-Rabbit IgG (H+L) (AS014) at 1:10000 dilution. Lysates/proteins: 25µg per lane. Blocking buffer: 3% nonfat dry milk in TBST. Detection: ECL Basic Kit (RM00020). Exposure time: 5s.



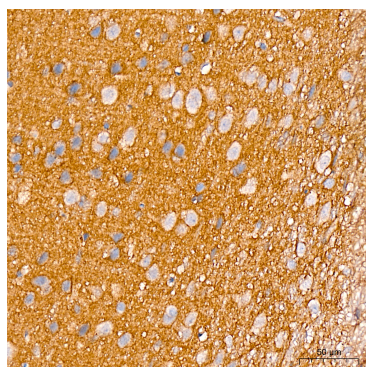
Immunohistochemistry analysis of paraffin-embedded Human small intestine tissue using SMPD3/NSMase2 Rabbit mAb (A23417) at a dilution of 1:200 (40x lens). High pressure antigen retrieval was performed with 0.01 M citrate buffer (pH 6.0) prior to IHC staining.



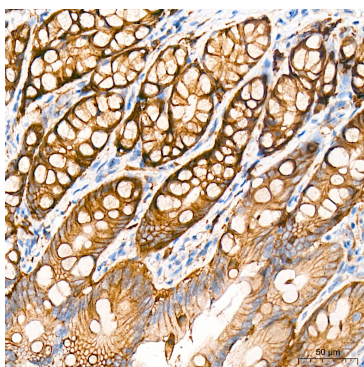
Immunohistochemistry analysis of paraffin-embedded Mouse brain tissue using SMPD3/NSMase2 Rabbit mAb (A23417) at a dilution of 1:200 (40x lens). High pressure antigen retrieval was performed with 0.01 M citrate buffer (pH 6.0) prior to IHC staining.



Immunohistochemistry analysis of paraffin-embedded Mouse intestine tissue using SMPD3/NSMase2 Rabbit mAb (A23417) at a dilution of 1:200 (40x lens). High pressure antigen retrieval was performed with 0.01 M citrate buffer (pH 6.0) prior to IHC staining.



Immunohistochemistry analysis of paraffin-embedded Rat brain tissue using SMPD3/NSMase2 Rabbit mAb (A23417) at a dilution of 1:200 (40x lens). High pressure antigen retrieval was performed with 0.01 M citrate buffer (pH 6.0) prior to IHC staining.



Immunohistochemistry analysis of paraffin-embedded Rat colon tissue using SMPD3/NSMase2 Rabbit mAb (A23417) at a dilution of 1:200 (40x lens). High pressure antigen retrieval was performed with 0.01 M citrate buffer (pH 6.0) prior to IHC staining.