

ABflo® 647 Rabbit anti-Human CD28 mAb

Catalog No.: A23406

Basic Information

Observed MW

Refer to figures

Calculated MW

25kDa

Category

Primary antibody

Applications

FC

Cross-Reactivity

Human

CloneNo number

ARC5082-01

Conjugate

ABflo® 647. Ex:648nm. Em:664nm.

Recommended Dilutions

FC 5 µl per 10⁶ cells in
100 µl volume

Background

The protein encoded by this gene is essential for T-cell proliferation and survival, cytokine production, and T-helper type-2 development. Several alternatively spliced transcript variants encoding different isoforms have been found for this gene.

Immunogen Information

Gene ID

940

Swiss Prot

P10747

Immunogen

Recombinant protein (or fragment). This information is considered to be commercially sensitive.

Synonyms

Tp44

Contact

☎ | 400-999-6126

✉ | cn.market@abclonal.com.cn

🌐 | www.abclonal.com.cn

Product Information

Source

Rabbit

Isotype

IgG

Purification

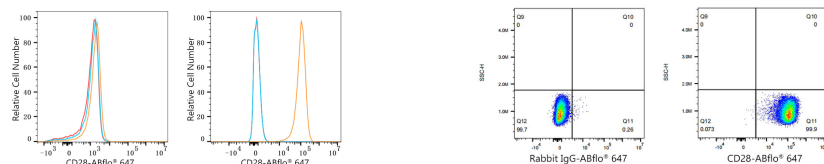
Affinity purification

Storage

Store at 2-8°C. Avoid freeze.

Buffer: PBS containing 0.2% BSA, preserved with proclin300 or sodium azide (as specified on the Certificate of Analysis), pH 7.3.

Validation Data



Flow cytometry: 1×10^6 K-562 cells (negative control, left) and U266 cells (right) were surface-stained with ABflo® 647 Rabbit anti-Human CD28 mAb (A23406, 5 μ l/Test, orange line) or ABflo® 647 Rabbit IgG isotype control (A22070, 5 μ l/Test, blue line). Non-fluorescently stained cells were used as blank control (red line).

Flow cytometry: 1×10^6 U266 cells were surface-stained with ABflo® 647 Rabbit IgG isotype control (A22070, 5 μ l/Test, left) or ABflo® 647 Rabbit anti-Human CD28 mAb (A23406, 5 μ l/Test, right).