

ABflo® 488 Rabbit anti-NHP IgD mAb

Catalog No.: A23403

Basic Information

Observed MW

Calculated MW

Category

Primary antibody

Applications

FC

Cross-Reactivity

Cynomolgus, Rhesus

CloneNo number

ARC60233

Conjugate

ABflo® 488. Ex:491nm. Em:516nm.

Background

Recommended Dilutions

FC 5 µl per 10⁶ cells in
 100 µl volume

Immunogen Information

Gene ID

Swiss Prot

Immunogen

Recombinant protein (or fragment). This information is considered to be commercially sensitive.

Synonyms

Contact

 | 400-999-6126

 | cn.market@abclonal.com.cn

 | www.abclonal.com.cn

Product Information

Source

Rabbit

Isotype

IgG

Purification

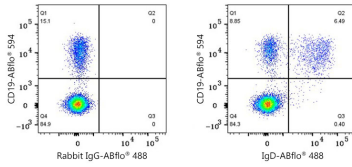
Affinity purification

Storage

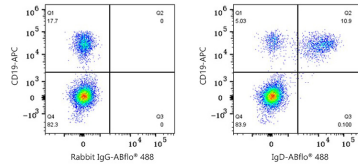
Store at 2-8°C. Avoid freeze.

Buffer: PBS containing 0.2% BSA, preserved with proclin300 or sodium azide (as specified on the Certificate of Analysis), pH 7.3.

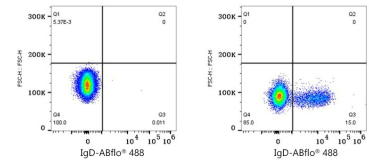
Validation Data



Flow cytometry: 1X10⁶ Rhesus PBMC were surface-stained with ABflo® 450 Mouse anti-Human CD11b mAb (A27475,5 µl/Test), ABflo® 594 Rabbit anti-Human/Monkey CD19 mAb (A24191,5 µl/Test), and ABflo® 488 Rabbit IgG isotype control (A22069,5 µl/Test,left) or ABflo® 488 Rabbit anti-NHP IgD mAb (A23403,5 µl/Test,right). Cells in the CD11b- gate were used for analysis.



Flow cytometry: 1X10⁶ Cynomolgus PBMC were surface-stained with APC Rabbit anti-Human/Monkey CD19 mAb (A26220,5 µl/Test) and ABflo® 488 Rabbit IgG isotype control (A22069,5 µl/Test,left) or ABflo® 488 Rabbit anti-Monkey IgD mAb (A23403,5 µl/Test,right). Cells in the lymphocyte gate were used for analysis.



Flow cytometry: 1X10⁶ Human peripheral blood mononuclear cells (negative control,left) and Cynomolgus peripheral blood mononuclear cells (right) were surface-stained with ABflo® 488 Rabbit anti-NHP IgD mAb (A23403,5 µl/Test,right). Cells in the lymphocyte gate were used for analysis.