

ABflo® 488 Rabbit anti-Human/Monkey CD16 mAb

Catalog No.: A23399

Basic Information

Observed MW

Refer to figures

Calculated MW

29KDa/26KDa

Category

Primary antibody

Applications

FC

Cross-Reactivity

Human, Cynomolgus

CloneNo number

ARC59985

Conjugate

ABflo® 488. Ex:491nm. Em:516nm.

Recommended Dilutions

FC 5 µl per 10⁶ cells in
 100 µl volume

Background

This gene encodes a receptor for the Fc portion of immunoglobulin G, and it is involved in the removal of antigen-antibody complexes from the circulation, as well as other responses, including antibody dependent cellular mediated cytotoxicity and antibody dependent enhancement of virus infections. This gene (FCGR3A) is highly similar to another nearby gene (FCGR3B) located on chromosome 1. The receptor encoded by this gene is expressed on natural killer (NK) cells as an integral membrane glycoprotein anchored through a transmembrane peptide, whereas FCGR3B is expressed on polymorphonuclear neutrophils (PMN) where the receptor is anchored through a phosphatidylinositol (PI) linkage. Mutations in this gene are associated with immunodeficiency 20, and have been linked to susceptibility to recurrent viral infections, susceptibility to systemic lupus erythematosus, and alloimmune neonatal neutropenia. Alternatively spliced transcript variants encoding different isoforms have been found for this gene.

Immunogen Information

Gene ID

Hu 2214/2215 Cyon 102140945

Swiss Prot

P08637/O75015

Immunogen

Recombinant protein (or fragment). This information is considered to be commercially sensitive.

Synonyms

CD16; FCG3; CD16A; FCGR3; IGFR3; IMD20; FCR-10; FCRIII; CD16-II; FCGRIII; FCRIIIA; FcGRIIIa; CD16b

Contact

☎ | 400-999-6126

✉ | cn.market@abclonal.com.cn

🌐 | www.abclonal.com.cn

Product Information

Source

Rabbit

Isotype

IgG

Purification

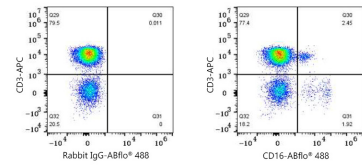
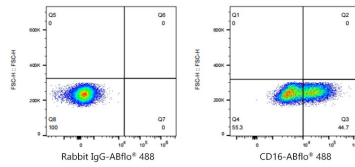
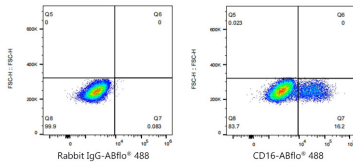
Affinity purification

Storage

Store at 2-8°C. Avoid freeze.

Buffer: PBS containing 0.2% BSA, preserved with proclin300 or sodium azide (as specified on the Certificate of Analysis), pH 7.3.

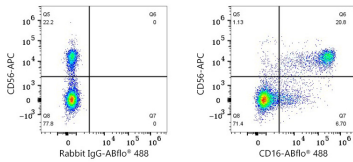
Validation Data



Flow cytometry: 1×10^6 293F-CD16a (Transfection) cells were surface-stained with ABflo® 488 Rabbit IgG isotype control (A22069,5 μ l/Test,left) or ABflo® 488 Rabbit anti-Human CD16 mAb (A23399,5 μ l/Test,right).

Flow cytometry: 1×10^6 293F-CD16b (Transfection) cells were surface-stained with ABflo® 488 Rabbit IgG isotype control (A22069,5 μ l/Test,left) or ABflo® 488 Rabbit anti-Human CD16 mAb (A23399,5 μ l/Test,right).

Flow cytometry: 1×10^6 Cynomolgus PBMC were surface-stained with APC Rabbit anti-Human/Monkey CD3 mAb (A27111,5 μ l/Test) and ABflo® 488 Rabbit IgG isotype control (A22069,5 μ l/Test,left) or ABflo® 488 Rabbit anti-Human/Monkey CD16 mAb(A23399,5 μ l/Test,right). Cells in the lymphocyte gate were used for analysis.



Flow cytometry: 1×10^6 Human PBMC were surface-stained with APC Rabbit anti-Human/Monkey CD56/NCAM1 mAb (A26932,5 μ l/Test) and ABflo® 488 Rabbit IgG isotype control (A22069,5 μ l/Test,left) or ABflo® 488 Rabbit anti-Human/Monkey CD16 mAb(A23399,5 μ l/Test,right). Cells in the lymphocyte gate were used for analysis.