

ABflo® 647 Rabbit anti-Human Claudin18.2 mAb

Catalog No.: A23392 **1 Publications**

Basic Information

Observed MW

Refer to figures

Calculated MW

27kDa

Category

Primary antibody

Applications

FC

Cross-Reactivity

Human

CloneNo number

ARC60744

Conjugate

ABflo® 647, Ex:648nm, Em:664nm.

Recommended Dilutions

FC 5 µl per 10⁶ cells in
100 µl volume

Background

This gene encodes a member of the claudin family. Claudins are integral membrane proteins and components of tight junction strands. Tight junction strands serve as a physical barrier to prevent solutes and water from passing freely through the paracellular space between epithelial or endothelial cell sheets, and also play critical roles in maintaining cell polarity and signal transductions. This gene is upregulated in patients with ulcerative colitis and highly overexpressed in infiltrating ductal adenocarcinomas. PKC/MAPK/AP-1 (protein kinase C/mitogen-activated protein kinase/activator protein-1) dependent pathway regulates the expression of this gene in gastric cells. Alternatively spliced transcript variants encoding different isoforms have been identified.

Immunogen Information

Gene ID

51208

Swiss Prot

P56856-2

Immunogen

Recombinant protein (or fragment). This information is considered to be commercially sensitive.

Synonyms

SFTA5

Contact

☎ | 400-999-6126

✉ | cn.market@abclonal.com.cn

🌐 | www.abclonal.com.cn

Product Information

Source

Rabbit

Isotype

IgG

Purification

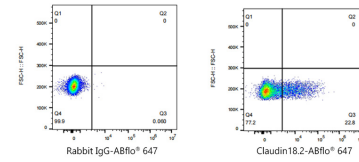
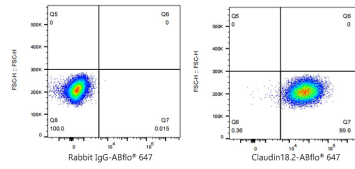
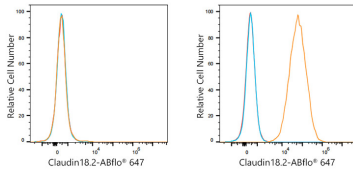
Affinity purification

Storage

Store at 2-8°C. Avoid freeze.

Buffer: PBS containing 0.2% BSA, preserved with proclin300 or sodium azide (as specified on the Certificate of Analysis), pH 7.3.

Validation Data



Flow cytometry: 1×10^6 CHO(Transfection) cells were surface-stained with ABflo® 647 Rabbit anti-Human Claudin18.2 mAb(A23392,5 μ l/Test,orange line) or ABflo® 647 Rabbit IgG isotype control (A22070,5 μ l/Test,blue line).Non-fluorescently stained CHO(Transfection) cells were used as blank control (red line).

Flow cytometry: 1×10^6 CHO(Transfection) cells were surface-stained with ABflo® 647 Rabbit IgG isotype control (A22070,5 μ l/Test,left) or ABflo® 647 Rabbit anti-Human Claudin18.2 mAb(A23392,5 μ l/Test,right).

Flow cytometry: 1×10^6 NUGC4 cells were surface-stained with ABflo® 647 Rabbit IgG isotype control (A22070,5 μ l/Test,left) or ABflo® 647 Rabbit anti-Human Claudin18.2 mAb(A23392,5 μ l/Test,right).