

DMT1/SLC11A2 Rabbit mAb

Catalog No.: A23379 **Recombinant** **5 Publications**

Basic Information

Observed MW

55-100kDa

Calculated MW

61kDa/62kDa/64kDa/65kDa

Category

Primary antibody

Applications

WB,IF/ICC,IP,ELISA

Cross-Reactivity

Human, Mouse

CloneNo number

ARC59972

Background

This gene encodes a member of the solute carrier family 11 protein family. The product of this gene transports divalent metals and is involved in iron absorption. Mutations in this gene are associated with hypochromic microcytic anemia with iron overload. A related solute carrier family 11 protein gene is located on chromosome 2. Multiple transcript variants encoding different isoforms have been found for this gene.

Recommended Dilutions

WB 1:500 - 1:1000

IF/ICC 1:50 - 1:200

IP 0.5µg-4µg antibody for 200µg-400µg extracts of whole cells

ELISA Recommended starting concentration is 1 µg/mL. Please optimize the concentration based on your specific assay requirements.

Immunogen Information

Gene ID

4891

Swiss Prot

P49281

Immunogen

Synthetic peptide. This information is considered to be commercially sensitive.

Synonyms

DCT1; DMT1; AHMIO1; NRAMP2; DMT1/SLC11A2

Contact

☎ | 400-999-6126

✉ | cn.market@abclonal.com.cn

🌐 | www.abclonal.com.cn

Product Information

Source

Rabbit

Isotype

IgG

Purification

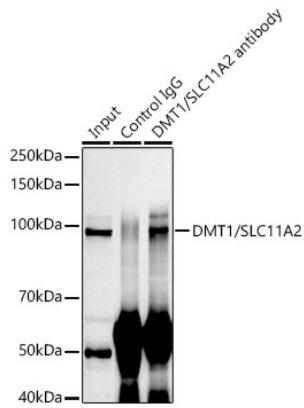
Affinity purification

Storage

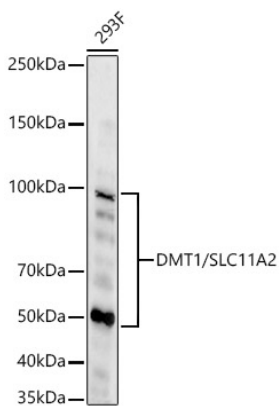
Store at -20°C. Avoid freeze / thaw cycles.

Buffer: PBS containing 50% glycerol and 0.05% BSA, preserved with proclin300 or sodium azide (as specified on the Certificate of Analysis), pH 7.3.

Validation Data



Immunoprecipitation analysis of 300 μ g extracts of 293F cells using 3 μ g DMT1/SLC11A2 Rabbit mAb (A23379). Western blot was performed from the immunoprecipitate using DMT1/SLC11A2 Rabbit mAb antibody (A23379) at a dilution of 1:1000.



Western blot analysis of lysates from 293F cells, using DMT1/SLC11A2 Rabbit mAb (A23379) at 1:1000 dilution.

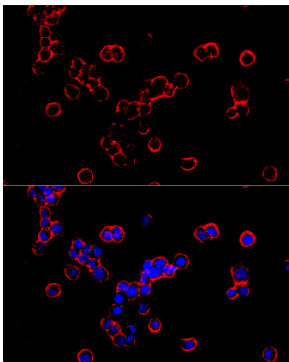
Secondary antibody: HRP-conjugated Goat anti-Rabbit IgG (H+L) (AS014) at 1:10000 dilution.

Lysates/proteins: 25 μ g per lane.

Blocking buffer: 3% nonfat dry milk in TBST.

Detection: ECL Basic Kit (RM00020).

Exposure time: 60s.



Immunofluorescence analysis of 293T cells using DMT1/SLC11A2 Rabbit mAb (A23379) at dilution of 1:100 (40x lens). Secondary antibody: Cy3-conjugated Goat anti-Rabbit IgG (H+L) (AS007) at 1:500 dilution. Blue: DAPI for nuclear staining.